

2023 Non-statutory Consultation Overview

Norwich to Tilbury

June 2023

The Great Grid Upgrade

Norwich to Tilbury

nationalgrid

Agenda

-
- 01** Introduction and project background

 - 02** Regional context and need for reinforcement

 - 03** The 2022 non-statutory consultation

 - 04** Strategic Options Backcheck and Review

 - 05** Our proposals for Norwich to Tilbury

 - 06** The 2023 non-statutory consultation

 - 07** Q&A

01

Introduction and project background

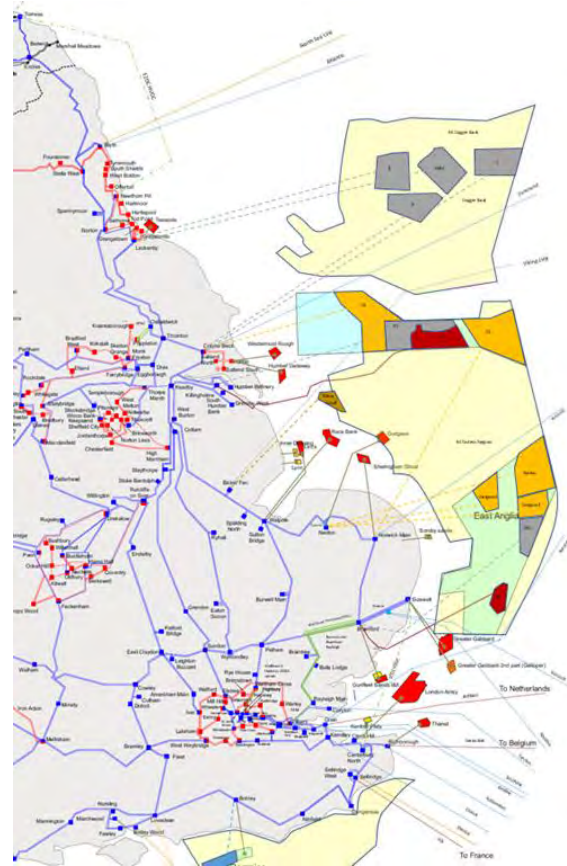
The Great Grid Upgrade

Norwich to Tilbury

nationalgrid

The challenge

- Significant amount of energy generation above current capacity connecting into Norwich and Necton.
- the Climate Emergency – **net zero by 2050**
- government's offshore wind ambition - **50 GW by 2030**
- offshore wind connection points and network reinforcements are required up and down the East Coast.



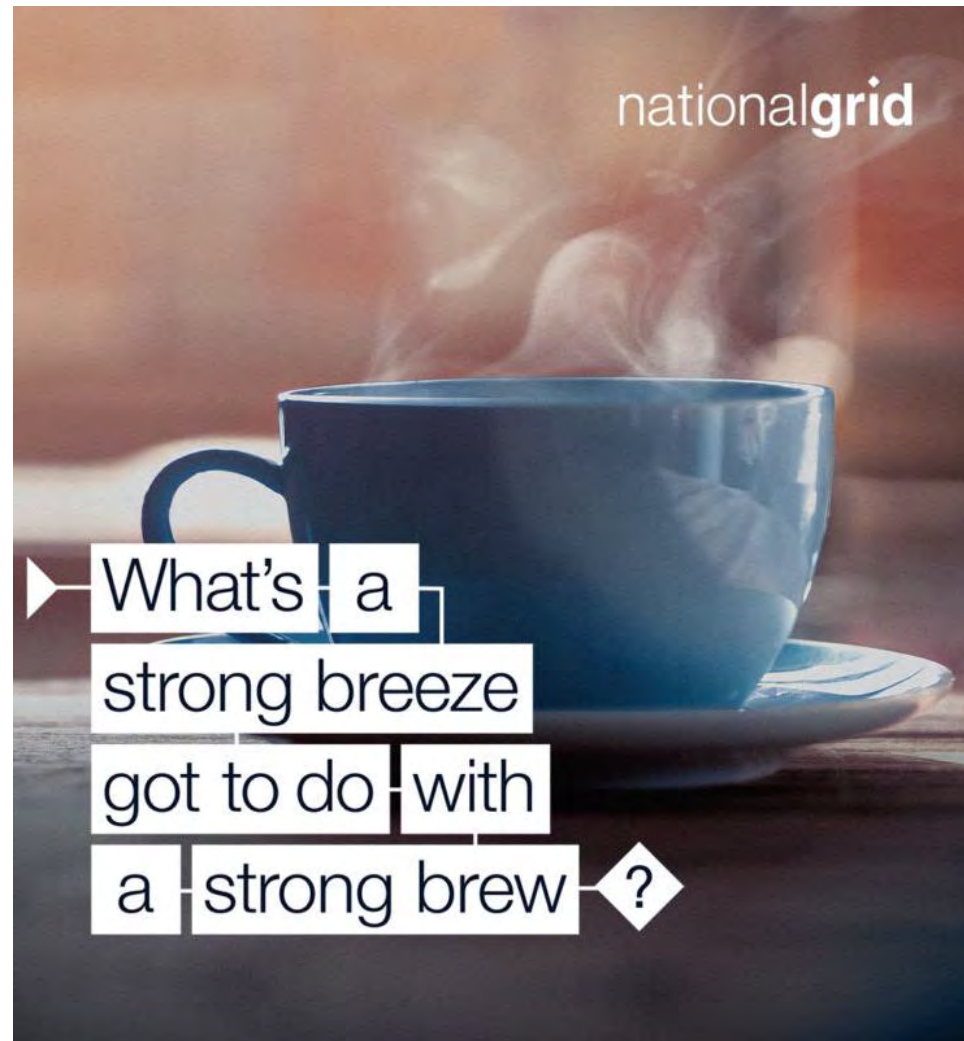
The Great Grid Upgrade

Norwich to Tilbury is part of The Great Grid Upgrade – the largest overhaul of the electricity grid in generations.

The Great Grid Upgrade will play a big part in the UK government's plan to boost homegrown power.

It will help the UK switch to clean energy, by enabling the connection of more renewable and low carbon electricity and will create long lasting benefits to households and businesses across the UK.

We have changed the name of the project from East Anglia GREEN to **Norwich to Tilbury**. We've changed the name to make it clear that this project is part of The Great Grid Upgrade.



02

Regional context and need for reinforcement

The Great Grid Upgrade

Norwich to Tilbury

nationalgrid

The existing transmission network

East Anglia's 400,000 volt (400 kV) electricity transmission network was built in the 1960s to supply regional demand, centred around Norwich and Ipswich. With the growth in new energy generation from offshore wind, nuclear power and interconnection with other countries, there will be more electricity connected in East Anglia than the network can currently accommodate.

Over the next decade we expect between 14,000 MW and 18,500MW of new generation and new interconnection to connect in the region.

Our existing power lines do not have sufficient capacity to accommodate this new generation.



Increasing the capability of the existing network

Before we consider the potential need to build new lines, we will always look to improve the existing network. That is the case here, including:

- installing power control devices at Pelham, Rye House and Waltham Cross, to make more use of an existing route to the west of the region
- increasing the voltage of a section of line from Waltham Cross south into London to 400 kV
- re-wiring existing overhead lines with conductors that can carry more power from Bramford to Braintree to Rayleigh to Tilbury, Twinstead and Pelham and between Norwich and Bramford.

Making these improvements will increase the capability of the existing network, but it is still insufficient to deliver the capacity required and we need to build new reinforcements:

- Norwich to Tilbury Reinforcement
- Bramford to Twinstead Reinforcement
- Sea Link – a subsea link between East Anglia and Kent.



Connecting other customers

Three signed connection customers:

- **North Falls** - Extension to the existing Greater Gabbard Wind Farm off the coast of Essex.
- **Five Estuaries** - Sister project to the existing 353 MW Galloper Wind Farm, 30 km off the coast of Essex.
- **Tarchon Energy** – Developing an interconnector between the UK and Germany





03

2022 non-statutory consultation

The Great Grid Upgrade

Norwich to Tilbury

nationalgrid

2022 non-statutory consultation

- Wrote to all homes within 1km of the edge of preferred corridor.
- Briefed all local authorities along the route.
- Provided a comprehensive online and face-to-face approach to consultation, covering 12 public events and 12 online webinars. More than 3,000 people attended an event or webinar.
- Provided consultation materials online, at events or via one of 13 information points across the consultation zone.
- Received 3,787 feedback submissions, including 2,138 feedback forms.



Activity since the 2022 consultation

- Sought landowner access for surveying activity.
- Published our 2022 non-statutory consultation newsletter, issued to over 50,000 properties.
- Continued to engage with stakeholders and elected representatives, including local authorities, environmental bodies and MPs across the Project area.
- Undertaken scoping for the environmental impact assessment.
- Carried out environmental surveys and appraisals to provide more detail on the potential environmental effects of the proposals to inform routing.
- Reviewed feedback and continued to develop our design proposals.



Thank you to everyone who took the time to take part in our first stage of consultation on the proposed East Anglia Green Energy Enablement (GREEN) project.

We were pleased to receive such a high number of responses to the consultation and this feedback is vital to help inform decisions we make about the project, including refining the route of the corridor.

Since the close of consultation, we have taken the time to carefully review your feedback in detail. The information you gave us, along with findings from environmental surveys and assessments, is helping us to develop our plans in more detail. We will consult with you again on our more developed proposals in 2023.

In this newsletter we:

- explain our proposals
- provide an overview of the consultation
- summarise the main feedback themes
- answer your frequently asked questions
- set out what happens next.





04

Our proposals for Norwich to Tilbury

The Great Grid Upgrade

Norwich to Tilbury

nationalgrid

Our proposals for Norwich to Tilbury

Our proposals for reinforcement include:

- New 400 kV overhead line between Norwich and Bramford (AENC in NOA)
- New 400 kV overhead line between Bramford and Tilbury (ATNC in NOA)
- Underground cables through Dedham Vale AONB and additional undergrounding within its setting and where required.
- New 400 kV substation, to be connected into the new Bramford – Tilbury circuit, to connect North Falls and Five Estuaries offshore wind farms and Tarchon Interconnector.
- Key supporting infrastructure, including cabling sealing end (CSE) compounds.



Changes from last year - informed by feedback and technical assessments

We have made five changes outside the 2022 preferred route corridor:

- East of Wortham Ling
- North of Flowton
- West of Great Wenham
- West of Writtle
- Further east at Ingatestone

We have increased undergrounding at the following locations:

- Total of ~14.6km from Notley Enterprise Park through the AONB to EACN
- Total of ~5.3km near Great Horkelesley
- ~0.7km at Fairstead
- ~4.6km from north of Lower Thames Crossing to Tilbury Substation

Moved outside the graduated swathe but within the 2022 corridor in a number of other locations

Design Development Report and preferred route alignment

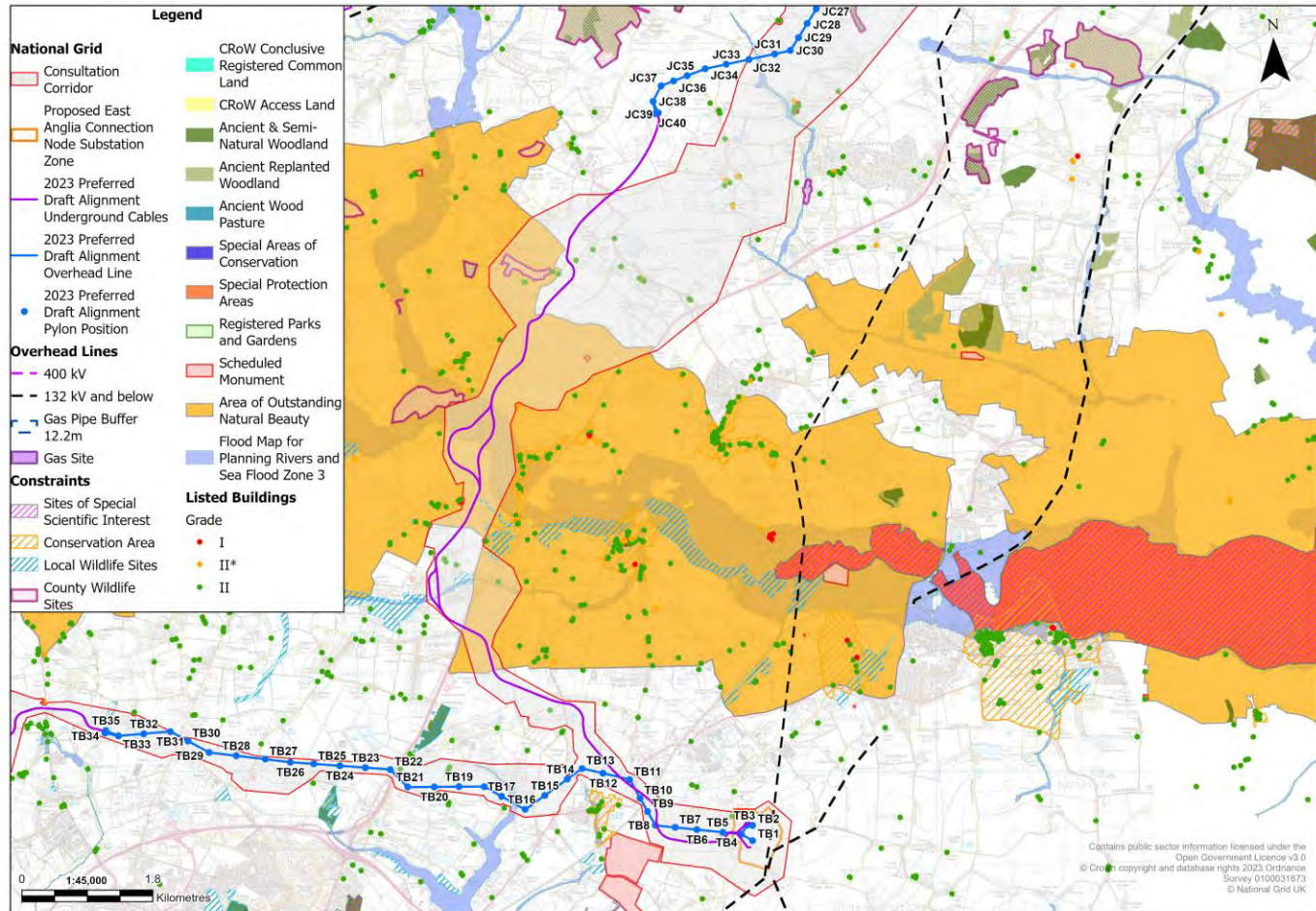
Design Development Report

- sets out alternatives identified in feedback and why preferred or not
- explains development of current preferred draft alignment including as informed by feedback

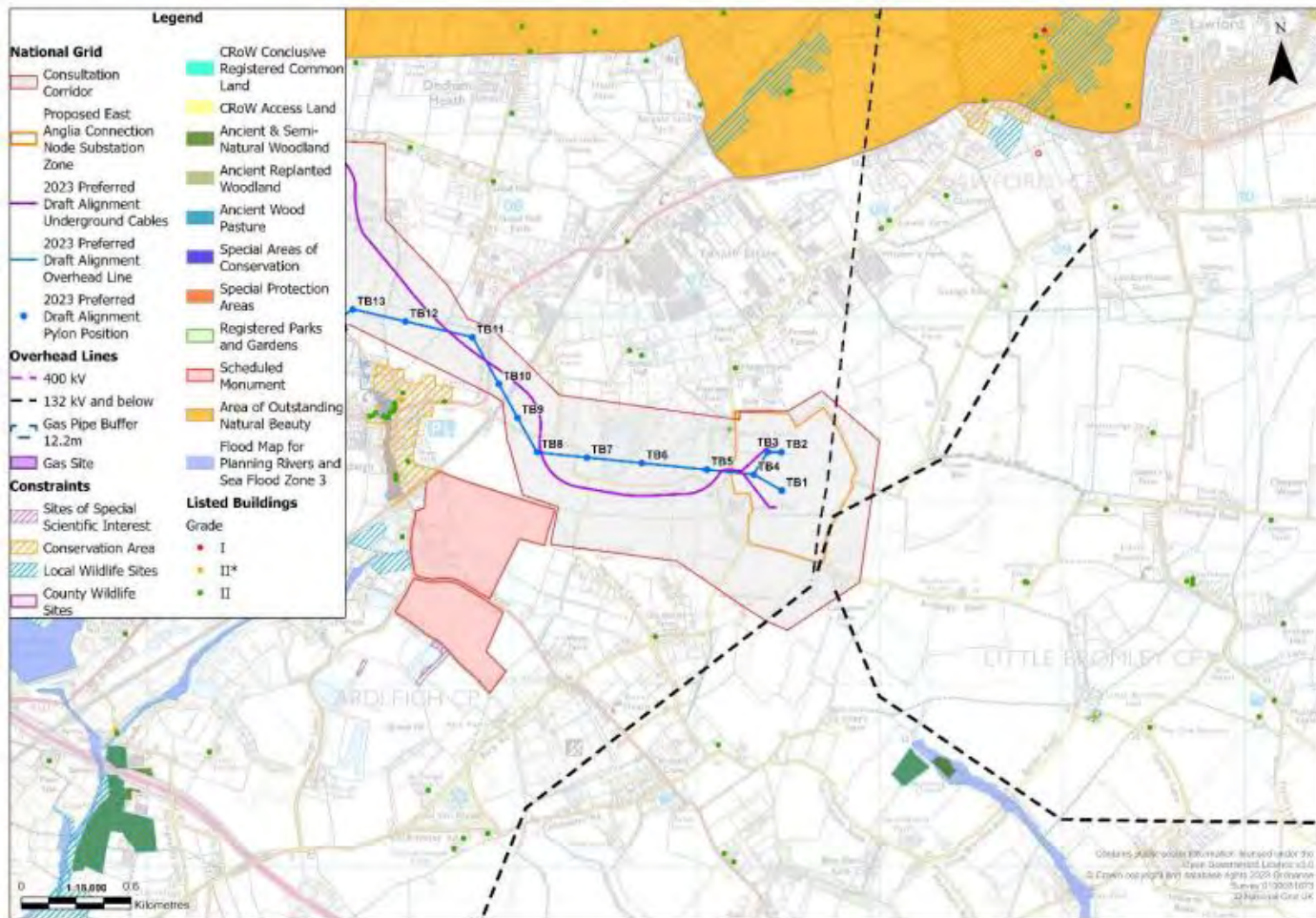
Preferred route alignment

- environmental constraints
- planning allocations and applications
- existing infrastructure
- 2022 non-statutory consultation feedback

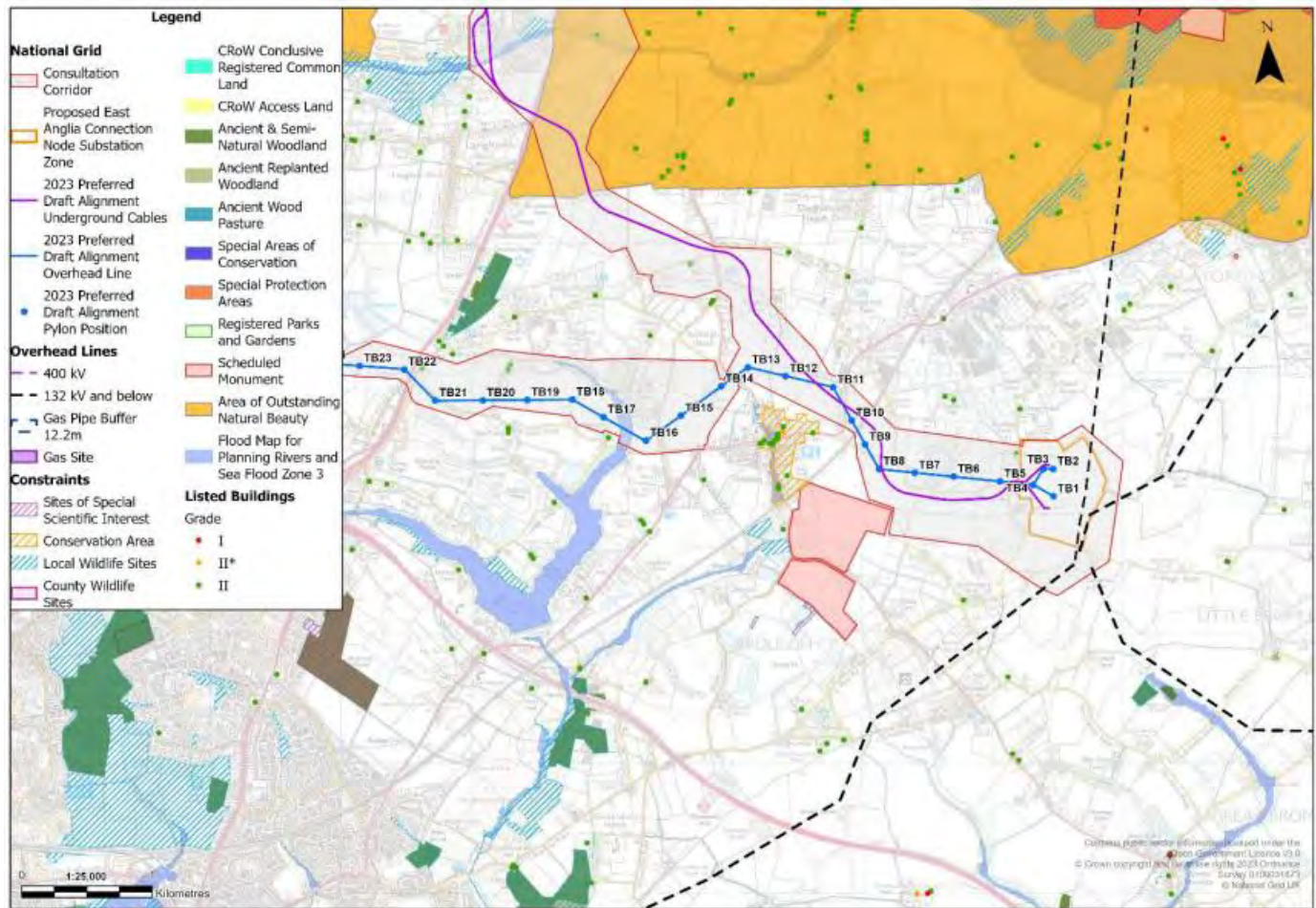
AONB to EACN substation



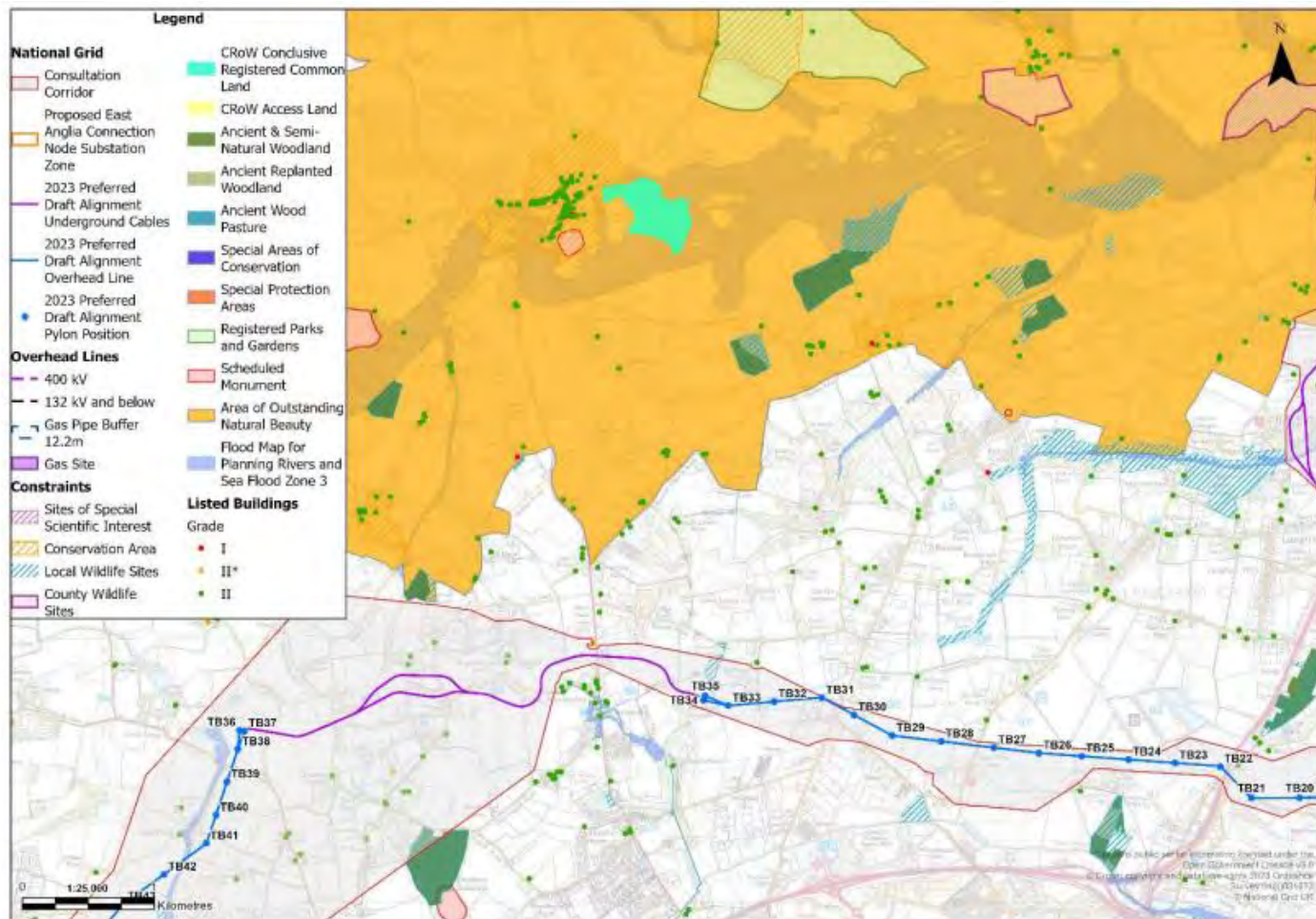
Substation Siting Area



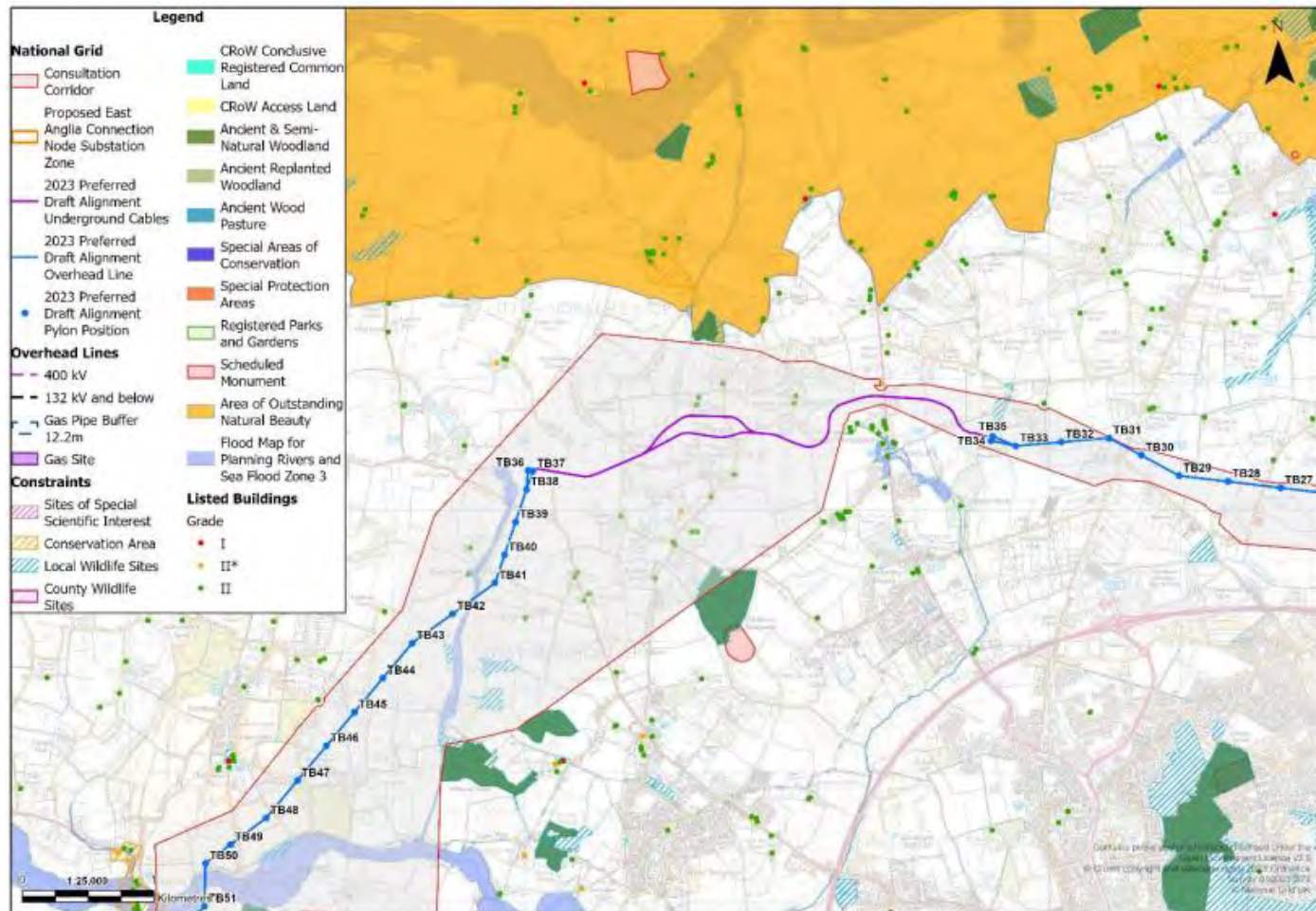
EACN substation to Ardleigh



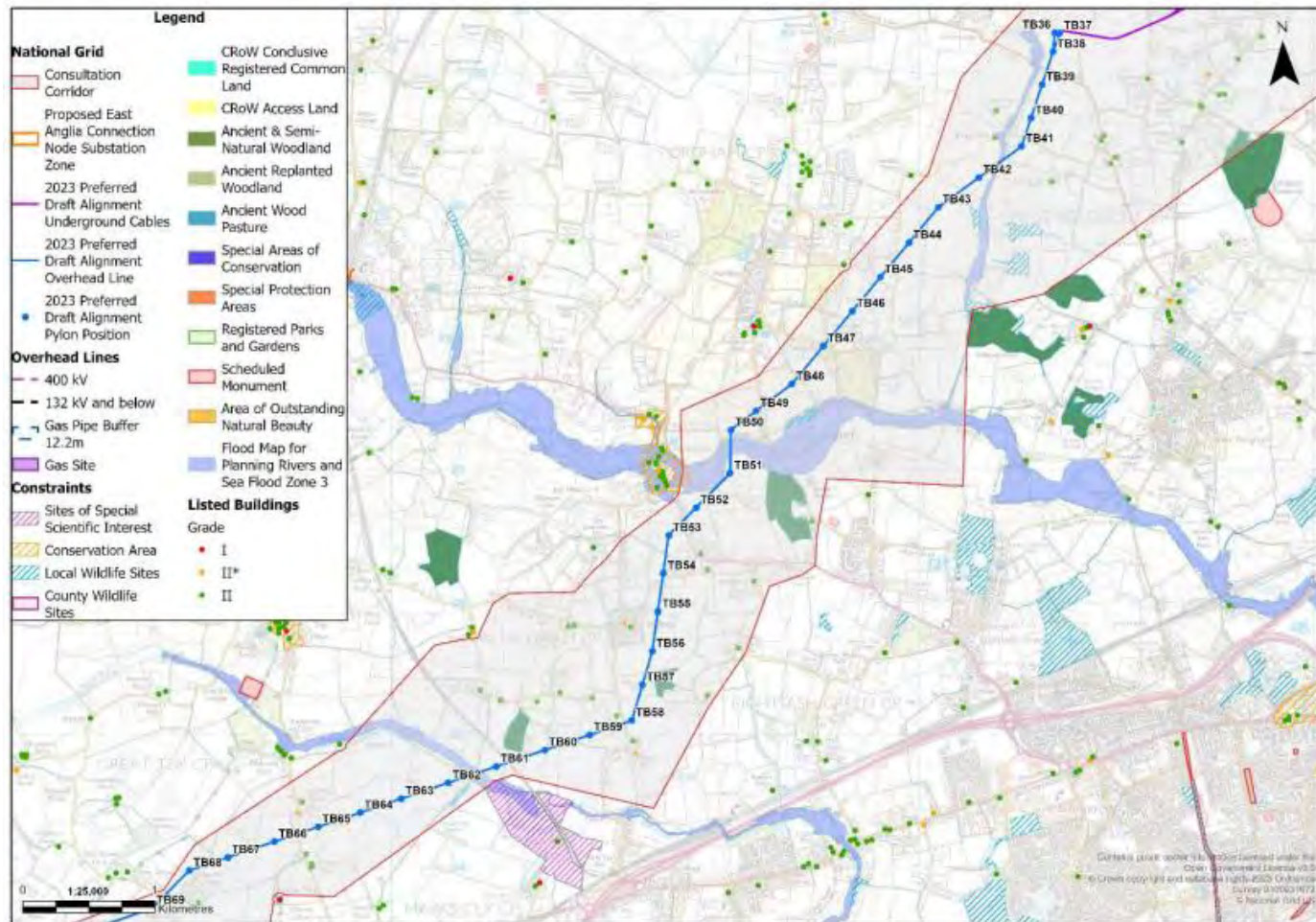
Ardleigh to Great Horkesley



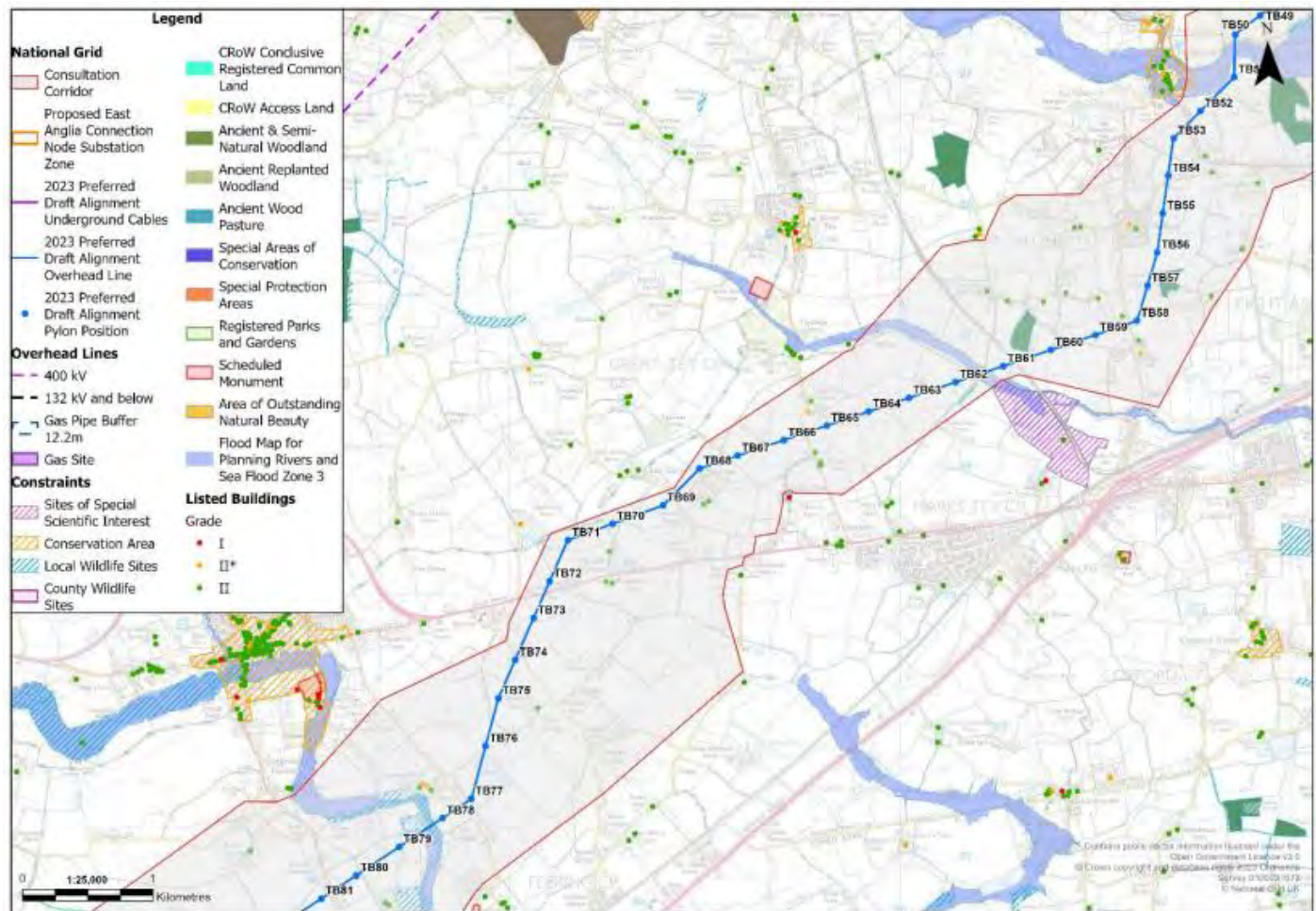
Great Horkesley & Colne Valley



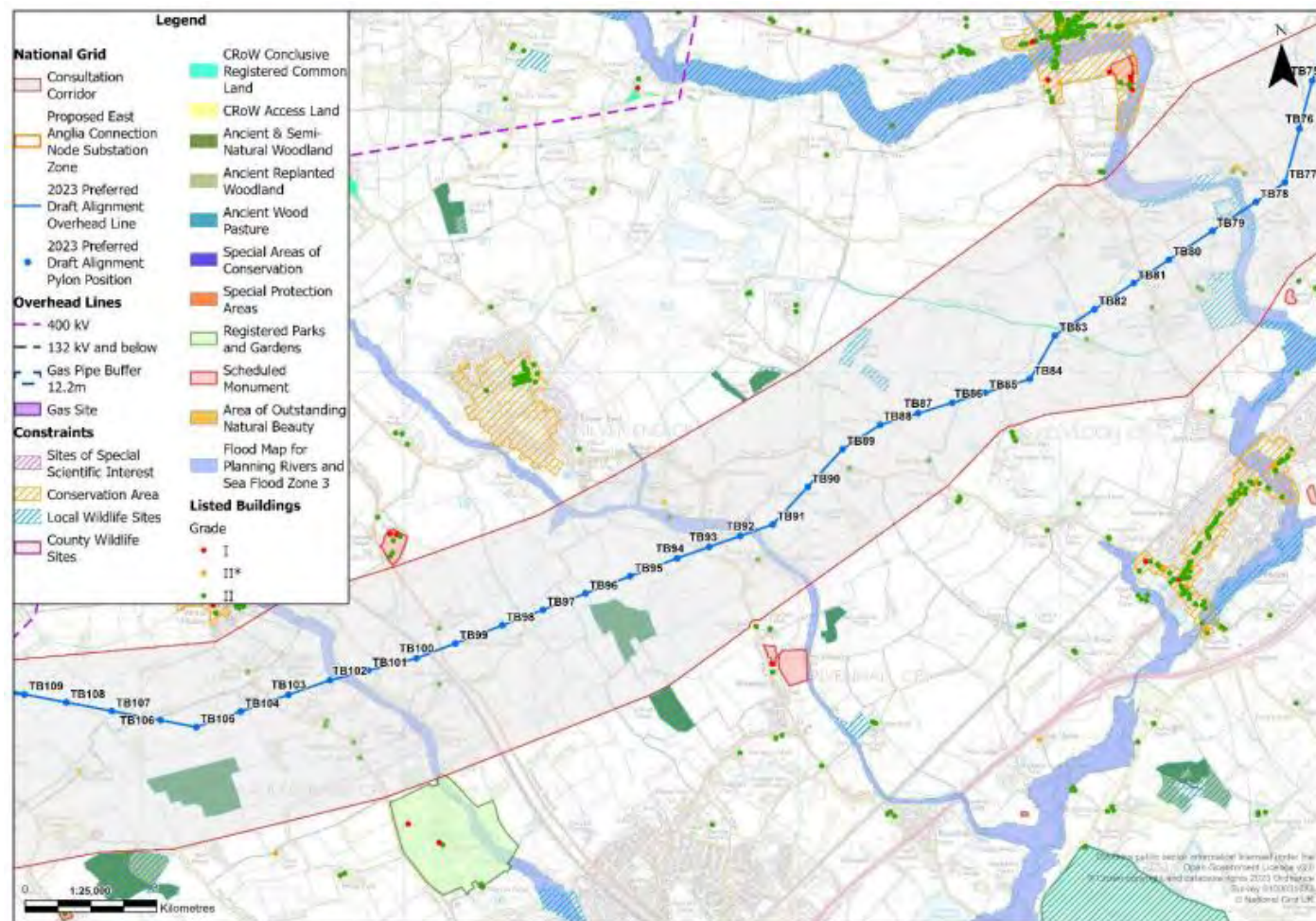
Colne Valley / Aldham



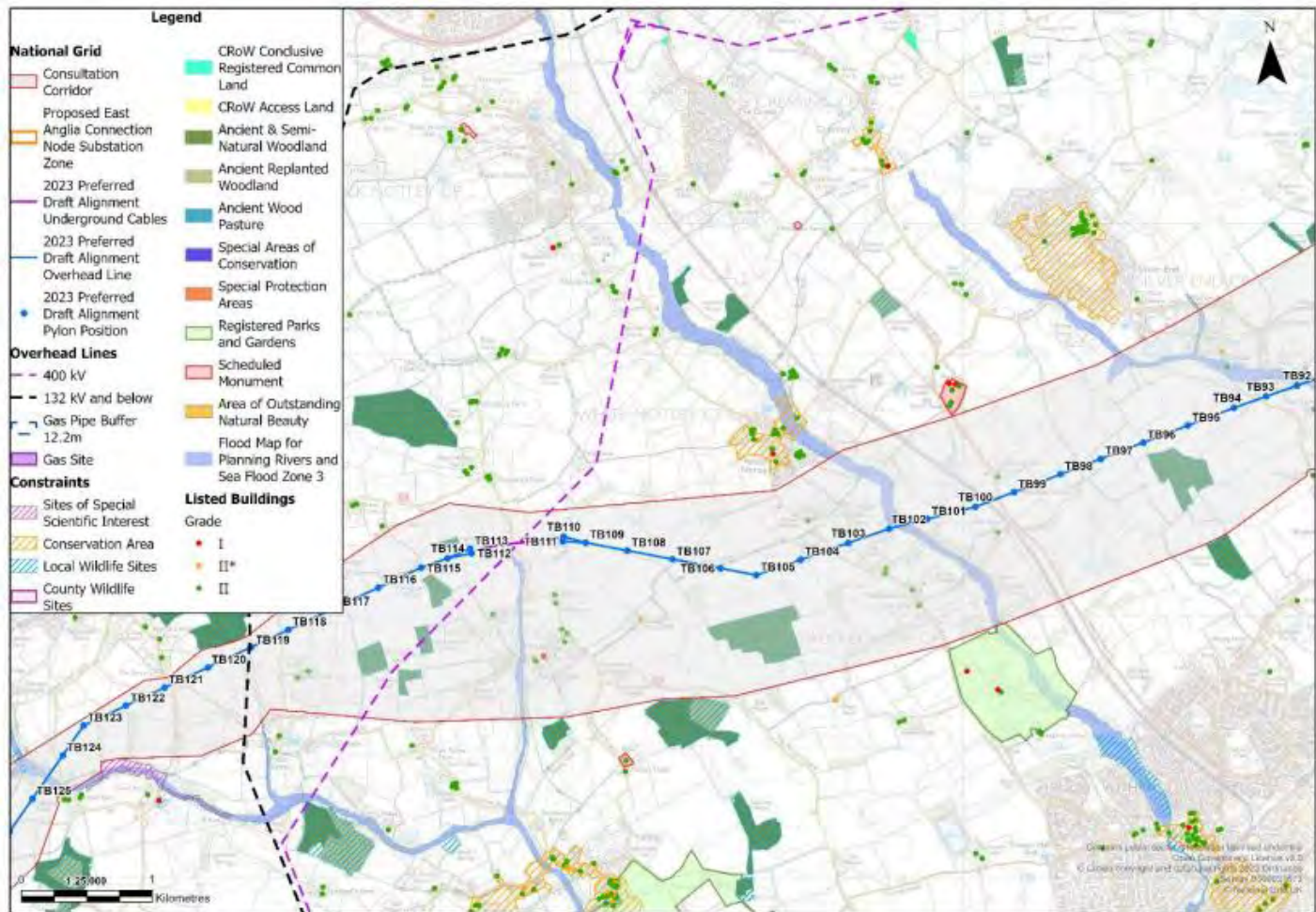
Marks Tey



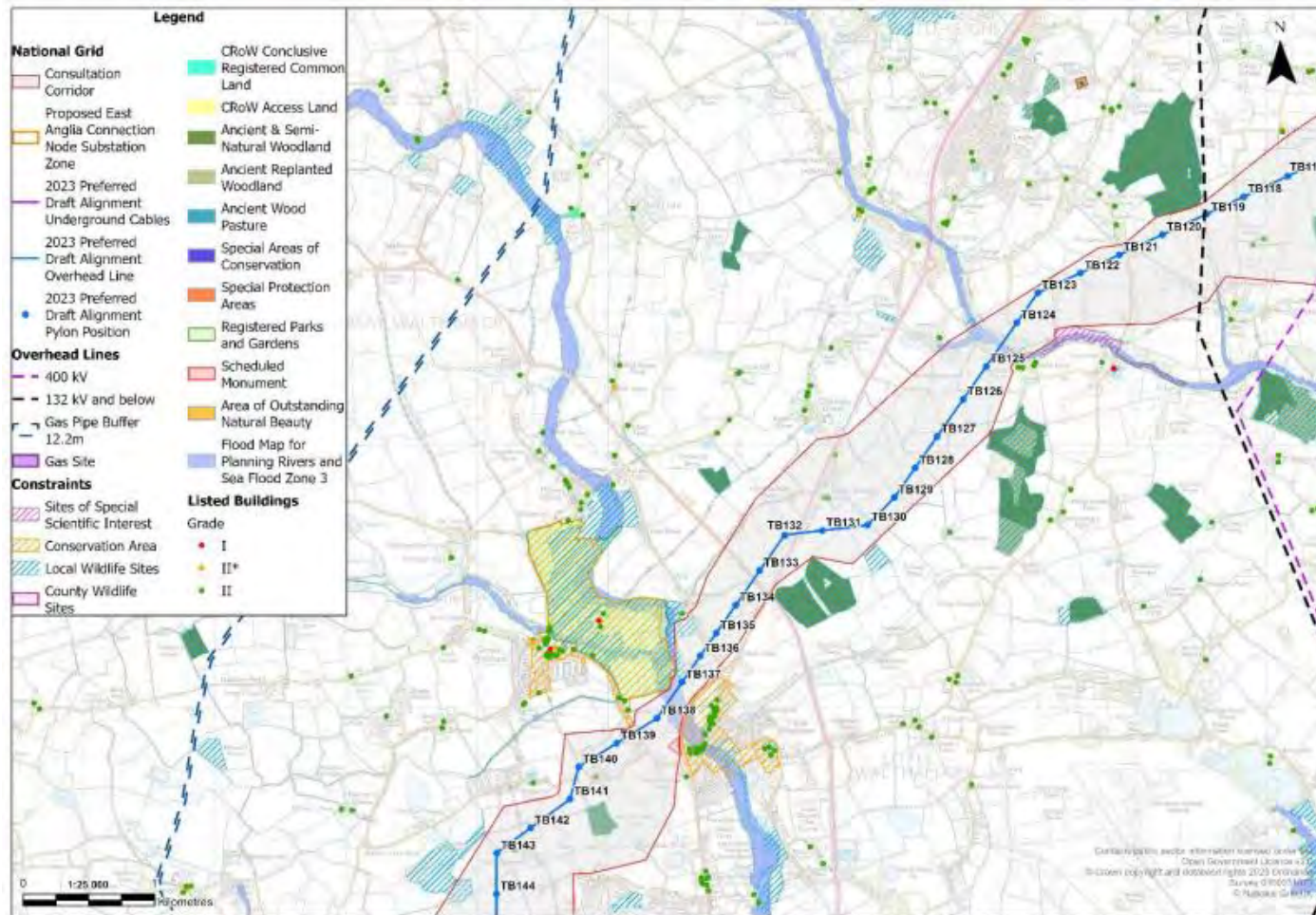
Coggeshall / Kelvedon



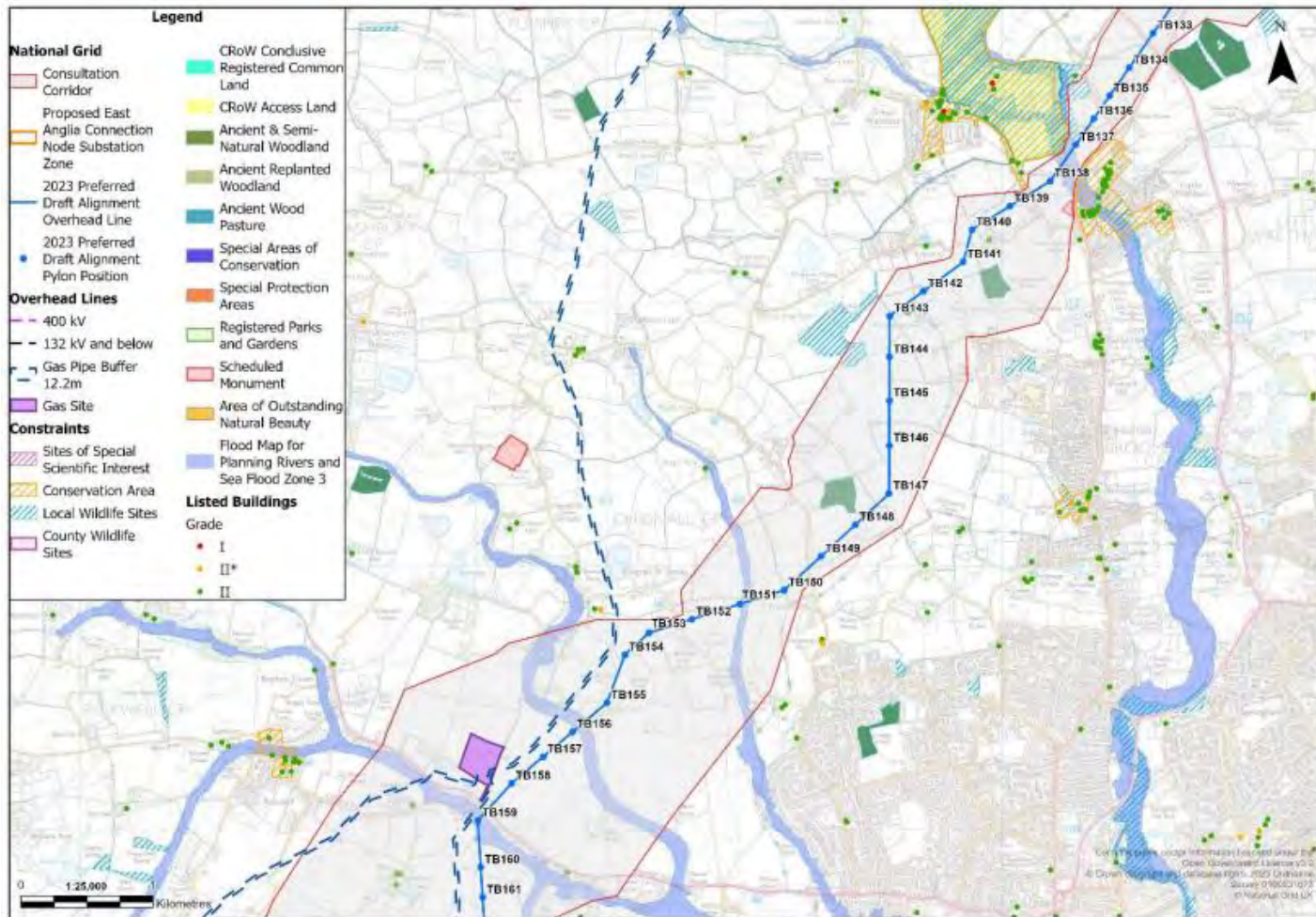
Fairstead



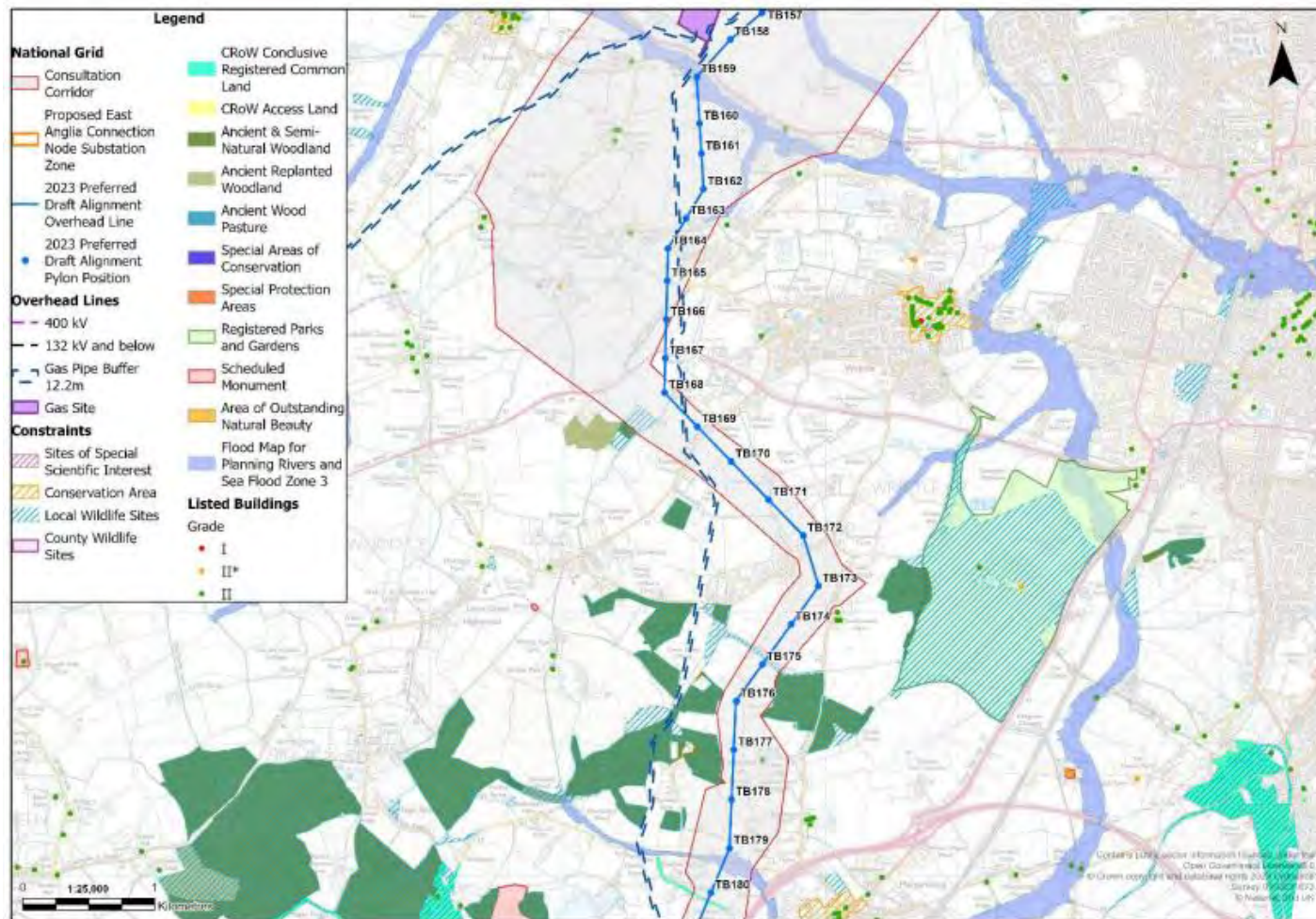
Great Leigh to Great and Little Waltham



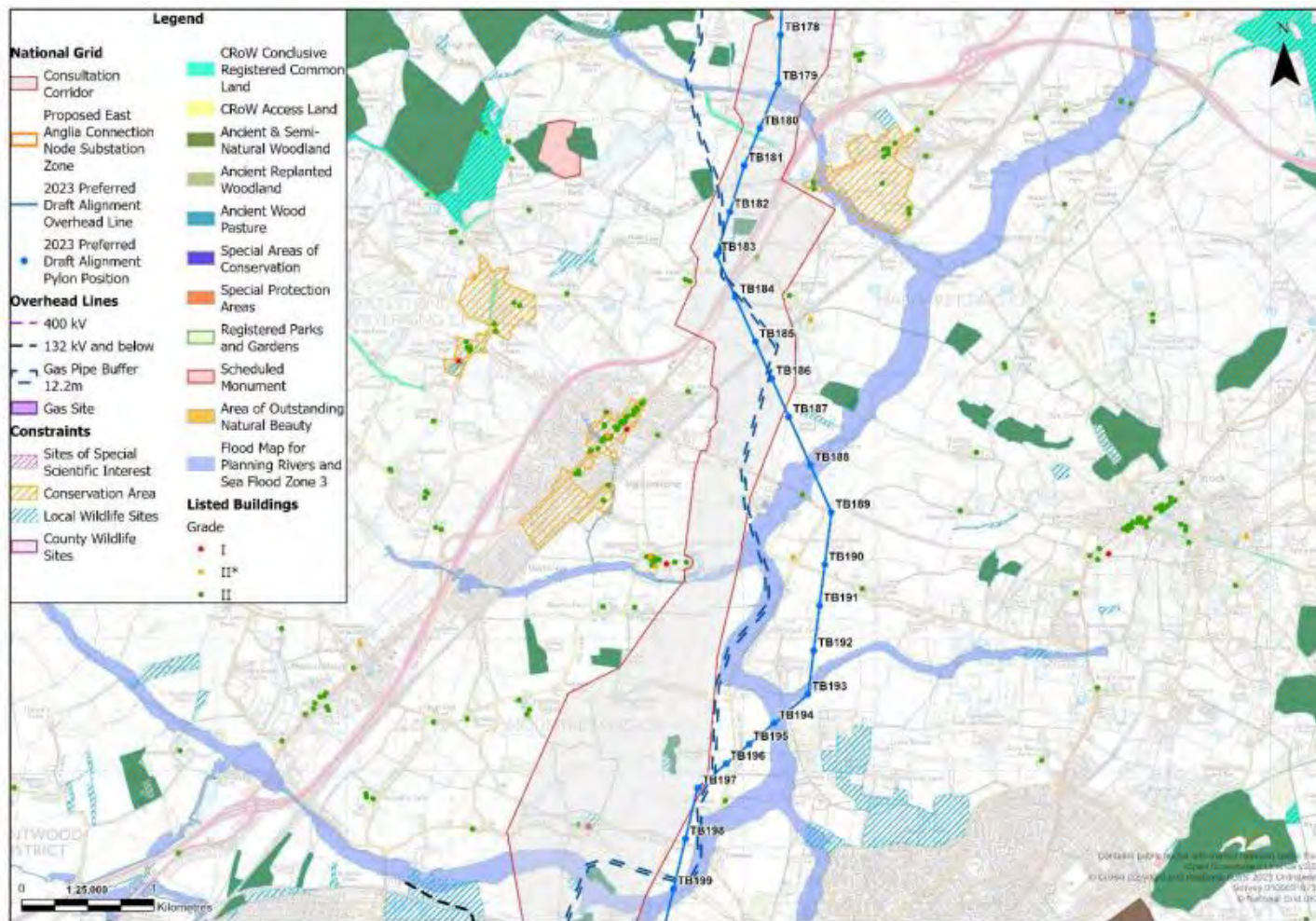
Broomfield / Chelmsford



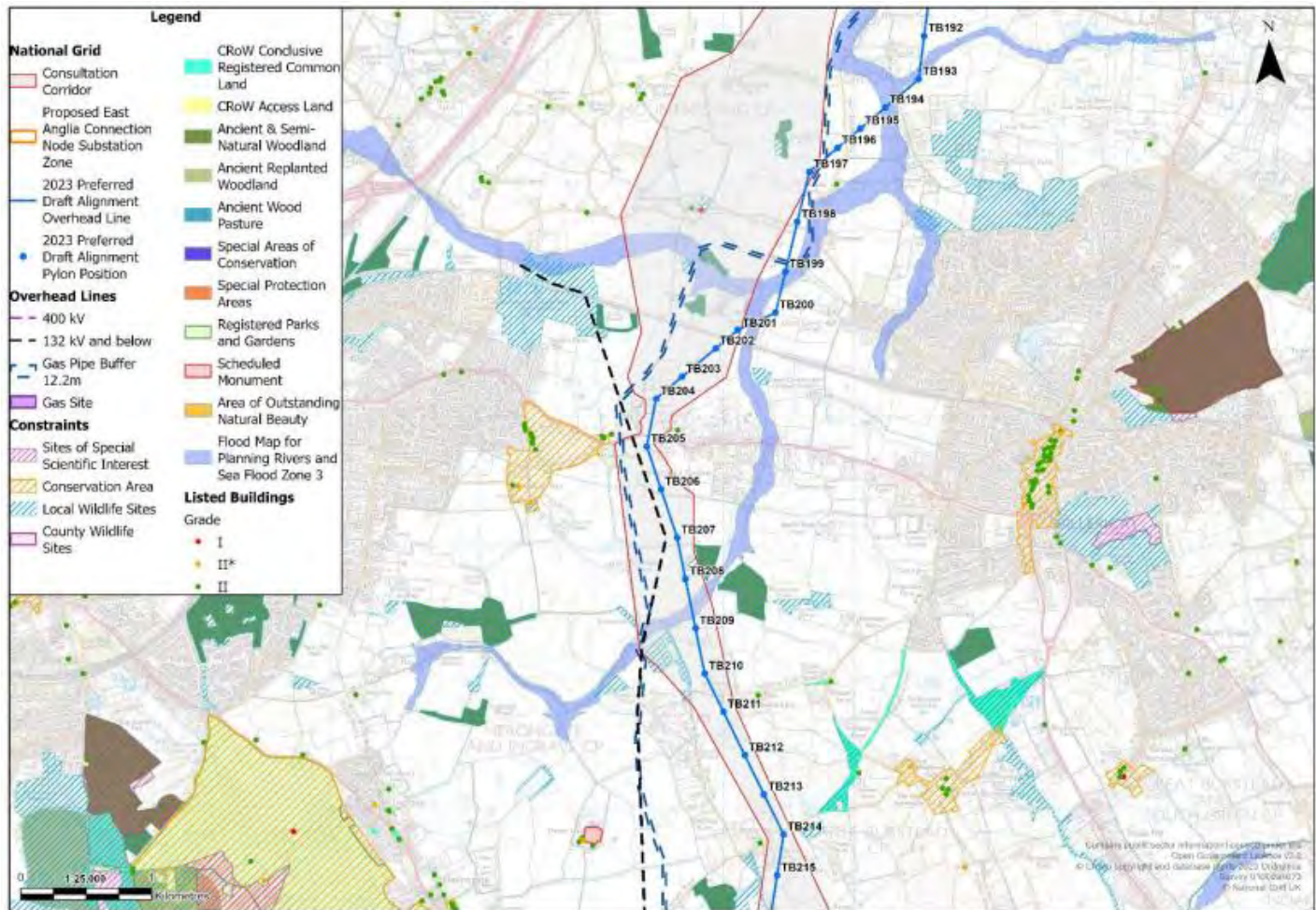
Writtle / Edney Common



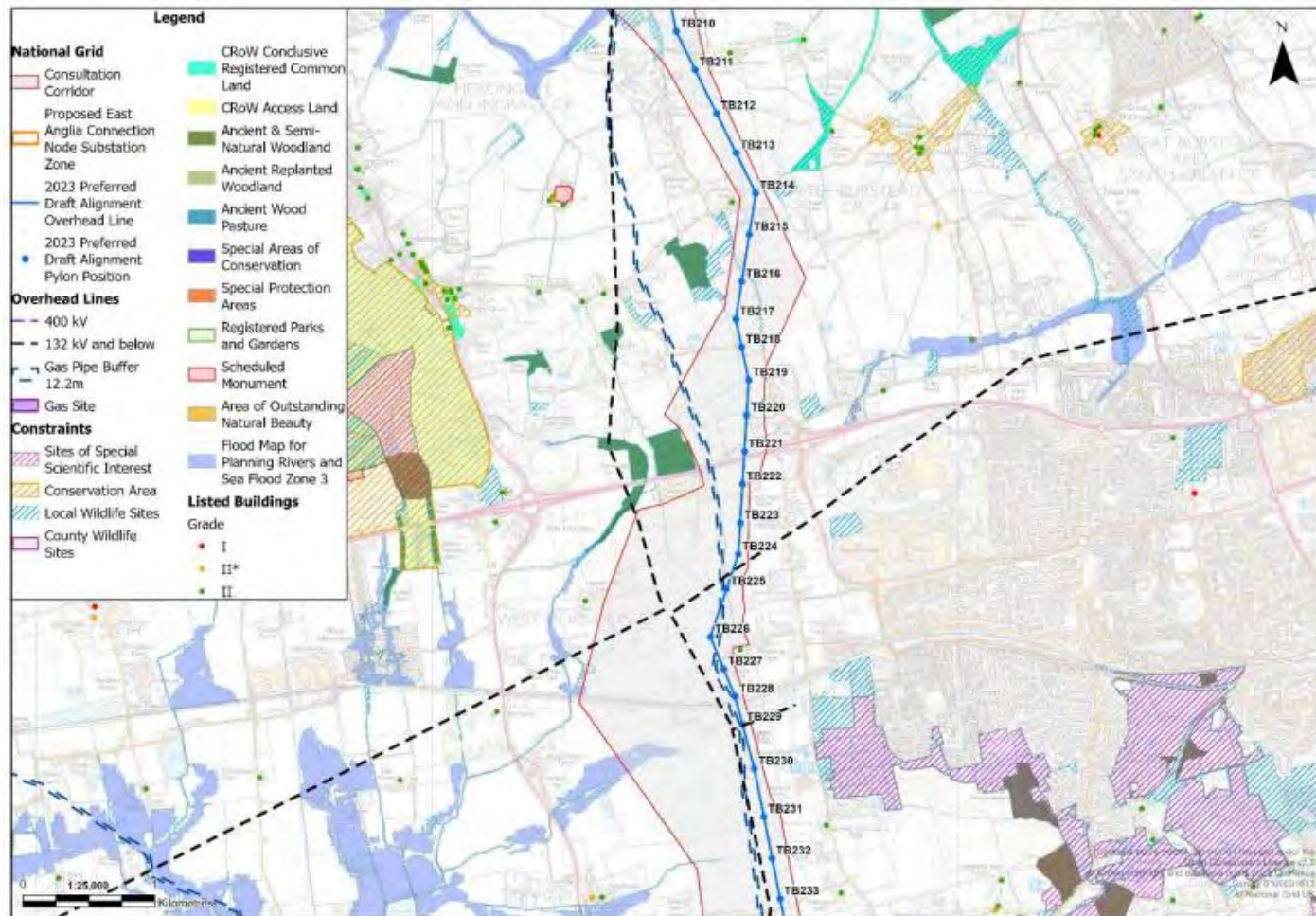
Change further east at Ingatstone



Hutton



Dunton Hills Garden Village



05

Public consultation
June – August 2023

The Great Grid Upgrade

Norwich to Tilbury

nationalgrid

Timing and duration

- Our public consultation begins on **27 June** and closes on **21 August 2023**, lasting eight weeks.
- We have set out our proposed plans for public consultation in a Consultation Strategy, which was reviewed and commented on by local councils.



2023 non-statutory public consultation

The purpose of this non-statutory consultation is to:

- Provide an overview of the updated project.
- Present our preferred draft alignment, including pylon positions, the locations of underground cables, cable sealing ends (CSEs), and the connection node substation.
- Explain where we have made changes to our proposals since the last consultation.
- Ensure all stakeholders have the opportunity to provide feedback on our work to date.
- Outline the next steps, the programme and how we will further develop our proposals.



How we are consulting

Materials being published

- Project website, which includes an interactive map to show proposals, FAQs, online feedback form and land team information
- Project Background Document 2023, Design Development Report 2023, Strategic Options Backcheck and Review 2023, and 2022 Non-Statutory Consultation Feedback Report
- maps and supporting technical documentation, including overview plans and preferred draft alignment section plans (June 2023)
- Consultation newsletter
- Feedback form

Stakeholder briefings

- MPs
- local elected representatives
- parish councils

Consultation events

- 12 face-to-face events
- four online webinars
- direct engagement, including youth engagement and outreach to seldom heard groups and organisations

Raising awareness of our consultation

To help target our engagement activity to reach communities who may be most directly affected by our proposals we identified two 'consultation zones':

- Primary consultation zone (PCZ) – extending for approx. 1 km from edge of preferred draft alignment, and including all properties within the 2022 PCZ
- Secondary consultation zone (SCZ) – extending for approx. 4 km from edge of preferred draft alignment

We will seek to raise awareness of the project and public consultation with stakeholders across both zones through the broad dissemination of information.

We will directly target stakeholders within the PCZ, while promoting more widely beyond that.

Direct mailing to PCZ

- newsletter to include summary information on the project, a map, consultation events, information on how to find out more and how to provide feedback
- project contact details (email, phone, freepost)

Advertising across SCZ

- paid-for advertisements in local and regional newspapers
- advertising on social media targeted geographically to SCZ
- information provision for parish councils to circulate to their communities
- press release distributed to regional / local publications

Information points

- placing promotional posters, newsletters, project documents and feedback forms in popular community 'hub' locations such as libraries

Consultation events

Venue	Local authority	Venue	Local authority
Tasburgh Village Hall Tuesday 18 July 1-6pm	South Norfolk	Langham Community Centre Thursday 13 July 2-7pm	Colchester
Tibenham Village Hall Monday 10 July 1-6pm	South Norfolk	Witham Public Hall Thursday 20 July 2-7pm	Braintree
Diss Youth and Community Centre Friday 7 July 2-7pm	South Norfolk (directly adjacent to Mid Suffolk)	Chelmsford City Racecourse Wednesday 12 July 2-7pm	Chelmsford
Blackbourne Community Centre Tuesday 11 July 11am-4pm	Mid Suffolk	Brentwood Centre Thursday 6 July 2-7pm	Brentwood
Copdock Village Hall Wednesday 19 July 2-7pm	Babergh	Basildon Sporting Village Friday 21 July 2-7pm	Basildon
Lawford Venture Centre Saturday 8 July 11am-4pm	Tendring	The Civic Hall Monday 17 July 2-7pm	Thurrock

Webinar events

Date	Time
Wednesday 5 July	1-2pm
Tuesday 25 July	7-8pm
Saturday 12 August	10-11am
Thursday 17 August	10-11am

How to respond to our consultation

- to sign up for a webinar or speak to the project team, please contact us using the details below.
 - **Website:** www.nationalgrid.com/norwich-to-tilbury
 - **Email:** contact@n-t.nationalgrid.com
 - **Call:** 0800 151 0992
- feedback forms are available:
 - online
 - at information points
 - at public events.
- you can request paper copies of all materials and feedback forms over the phone or by email.



06

Q&A

The Great Grid Upgrade

Norwich to Tilbury

nationalgrid