

village bulletin

March 2008 Issue 113

www.westbergholt.net

PARISH PLAN TAKING SHAPE - YOUR CHANCE TO COMMENT

Many of you will remember that towards the end of 2006 a questionnaire was attached to the Village Bulletin which sought your views on living in West Bergholt. Similar questionnaires were distributed to village organisations, businesses and young people.

The results of these consultations have now been fully analysed by the Parish Plan Steering Group, and used to help develop a draft Parish Plan. The group is now seeking to consult with residents again and you will find a "consultation document" as a centrefold pullout in this bulletin. The consultation document lists the main issues identified through the previous survey work and sets out a number of proposed actions for further consideration.

A number of ideas have been identified and this consultation represents your opportunity to indicate the priorities you think are important to take forward in the final version of the plan.

A Parish Plan is a government-sponsored initiative which encourages villages to devise

a plan of their aspirations for the community covering a variety of topics. Parish Plans do not have a statutory footing but they have been successful in many communities in raising issues and influencing those who provide services, such as local councils.

This consultation will last until 31st March 2008, so please let us have your responses by that date. The consultation questionnaire is also available on-line at www.westbergholt.net if you would like to submit your response electronically.

Support us and share your views and ideas so that we can produce a Parish Plan that mirrors the aspirations of the village.

More details are available for you to view on the village website: www.westbergholt.net.

Parish Plan Consultation

WEST BERGHOLT

We need your help!
The Parish Plan is entering its final stages, and an action plan containing the most important improvements you have suggested has been assembled.

Please take a few moments to read through this leaflet and let us have your thoughts.

It's your village,
now make it an even better place with a plan for the future!

More information on the Parish Plan at www.westbergholt.net

Paper copies of the draft plan are also available.

Chris Stevenson, Chair, Parish Plan Steering Group

Tel: 01206 241708 or email chrisstevenson@beeb.net

the village bulletin *information*

PROVIDED BY THE PARISH COUNCIL OF WEST BERGHOLT

Chairman

Mr J Gili-Ross
67 Mumford Road,
West Bergholt
☎ 242 236



Vice-Chairman

Mr R W Tyrrell
Grey Gables,
8a Colchester Road
West Bergholt
☎ 240 016

PARISH COUNCILLORS

Mrs J Church	Doran, Hall Road	☎	240 792
Mr B M Colbron	64 Mumford Road	☎	240 297
Mr P S Johnson	135 Chapel Road	☎	241 114
Mr A P Savage	6 Garling Walk	☎	242 015
Mr D Short	60 Albany Road	☎	241 715
Mr P Sleigh		☎	07973 841104
Mr C Stevenson	74 Mumford Road	☎	241 708
Mr H Stone	Vindens, Chapel Lane	☎	241 026
Vacancy			

PARISH WORKING COMMITTEES

Environment	Mr Johnson, Mr Colbron, Mr Sleigh, Mr Stevenson, Mr Short, Mr Stone
Finance & General Purpose	Mr Savage, Mr Gili-Ross, Mr Johnson, Mr Tyrrell
Hall	Mr Gili-Ross, Mr Colbron, Mr Sleigh, Mr Short, Mr Stevenson
Planning	Mr Tyrrell, Mr Savage, Mr Stone

BOROUGH COUNCILLORS

Cllr. Jill Tod	cllr.jill.tod@colchester.gov.uk	☎	574 896
Cllr. Dennis Willetts	dennis.willetts@btinternet.com	☎	240 314

CLERK TO THE PARISH COUNCIL

Mrs Val Walsom	17 Armoury Road, CO6 3JN	☎	240 149
----------------	--------------------------	---	---------


The Parish Clerk is available for Parish business at any reasonable time, but in particular on Tuesday evenings.

ORPEN HALL ADMINISTRATOR

Mrs J Mayhew		☎	240 694
--------------	--	---	---------

The Administrator is available to deal with enquiries at any reasonable time. Bookings should be made at the Hall on Thursdays between 7pm and 8pm. Please use the old side entrance.

SOME USEFUL NUMBERS

Police	210 441 or 211 680 or 762 212	In an emergency dial 999	
Doctor	Surgery - 2 Erle Havard Road	☎	241 137
Pharmacy	Chapel Road	☎	240 352
Post Office	Chapel Road (Half day Saturday)	☎	240 355
St Mary's Church	Rev. C Horseman, The Rectory, Ivy Lodge Road, Gt. Horkesley	☎	271 242
Methodist Church	Rev. Ruth Ridge, Marks Tey office	☎	210 141
News Correspondent	Mrs J Hunns, The Laurels, Firmins Court	☎	240 712

(for Essex County Standard & The East Anglian Daily Times) - submissions for news items to be in 2 weeks prior to publication.
Email address for News Correspondent allanhunns@aol.com

The village bulletin is funded by the Parish Council as part of a community service. It is issued quarterly and distributed to every household in the Parish. The views expressed do not necessarily reflect those of the Parish Council.

West Bergholt First Responder Group (FRG)

HAPPY BIRTHDAY

In the last quarter of 2007 we received one call out for a resident with difficulty in breathing and the Responder was with the patient for six minutes before the Ambulance Service arrived. Dedicated Responders covered Christmas Day, Boxing Day and New Year's Eve along with all the many other hours in between.

At the time of going to press we have 17 responders qualified to respond and 4 further trained but awaiting their CRB clearance.

A further generous donation of £50 from a West Bergholt business enabled us to place the order for our uniform polo tops. They are navy blue with the East of England Ambulance logo and name of our group

As a result of last year's warm welcome extended by Kielye Smith (paramedic educated at Heathlands) for two shifts with the Ambulance Service in Colchester, Annie Neish approached the Queensland Ambulance Service whilst on holiday in Brisbane in November 2007 and was welcomed aboard for a day shift. This showed that, despite being on the other side of the world, logistical and medical problems are the same the world over.

Our group meet once a month and, now that the group has expanded, we are grateful to Heathlands School for the use of their facilities for our meetings. In January 15 members held a meeting followed by our Christmas Party. We had a great time and got to know each other better. In March it will be our first birthday and we plan on holding another party to celebrate.

The website is in the process of being updated thanks to Nik Frampton who has offered his IT expertise to the group. Thank you for everyone's support. Your encouragement has enabled our group to grow to the point that we are an established and vital support group for West Bergholt.

Annie Neish 240469
www.west-bergholt-first-responders.co.uk



SOME SILLY HUMOUR

A Chinese road sign:
Go soothingly on the greasy road, for therein lurks the skid demon.

Q: In your opinion, how far apart were these vehicles at the time of collision?

Thanks via the Bulletin

The 2007 Christmas candlelight carol service at St Mary's Old Church. was our fourth successful year, and once again the weather was on our side. Our thanks to the Rev. Colin Horseman for another lovely service, Michael Neish, the Organist and most of all not forgetting Julian for 'pumping' the organ.

A number of people gave us great feedback on the actual day saying that they felt as though Christmas was finally here after experiencing the Carol service.

All donations that were kindly received were shared between the old and the new church.

We look forward to seeing you all again this Christmas.

Many thanks

Eileen, Pam and John



1st West Bergholt Brownies



RARE OPENING FOR THE RIGHT PERSON

This Brownie Unit has been established here in West Bergholt for over 50 years and for the last 19 has been fortunate to have a dedicated Assistant Guider, who sadly will be leaving in July to spend more time with her family. To ensure that this successful unit continues to operate in an effective manner the Unit Guider is now seeking to identify a like minded person who is prepared to take on the duties of the present Tawny Owl, Assistant Guider. This is an enjoyable role providing a real opportunity to help with the development of young girls who are members of the world wide family of Guiding.

The Unit has 24 members with a full waiting list and meets every Thursday evening from 5.45pm. to 7.00pm during term time at the West Bergholt Scout and Guide hut in Lexden Road. There is a wide programme of activities including outside visits and the occasional joint meeting with other units. The age range of the girls is from seven to ten years with the opportunity to then move on to the local Guide Company.

This is an ideal opening for a caring adult who is interested in helping with the young people of West Bergholt. The Unit Guider, Carol Clarke, would be very pleased to hear from anyone who is prepared to make the commitment of becoming the new Assistant Guider. Do not worry if you have had no experience of Guiding as full training will be given under the Girlguiding UK Leadership Scheme. Carol can be contacted on 240030 and looks forward to speaking with anyone who is interested.

Women's Institute

Our Christmas Party in December rounded off another busy year. Many members were encouraged to join in with a group of Scottish Dancers who after demonstrating some of the more intricate dances, then proceeded to teach us all some of the simpler ones. We began the New Year with a fun and games evening which was very much enjoyed judging by the chat and laughter which went on.

The W.I. meetings are not always comprised of Business and Speakers, we also enjoy the social atmosphere created among friends. Not only do we hold our regular monthly meetings but some members have reformed a play reading group in their own homes and occasionally entertain us with their sketches.

Why not join us on 1st Wednesday of each month in the Orpen Hall at 7.15pm.



West Bergholt Football Club

The season is going well at the moment, with the first team currently in fifth place in the Premier League, and the Reserves really excelling in first place in the Reserve Premier League. The newly formed Ladies Team are flying high at the top of their league, and are so far unbeaten in an excellent start to the season.



On the social front, we are preparing for our Easter visit to R S V Bublingshausen, our twinned club in Germany, where we hope to take a strong team. Although it's mainly a social occasion, both sides really like to win, it helps with the banter at the after match dinner.

We are also organizing several fund raising events, Race Nights, Quiz Nights, etc. to help finance the proposed new clubhouse.

The Junior Coaching Sessions on Saturday mornings are once again proving extremely popular, and are currently oversubscribed. This should bode well for the future of local football, and who knows what future stars might be produced.

One of our main tasks at the moment is trying to raise funds and organize grants for the new clubhouse, and to this end we need someone to co-ordinate grant applications. Is there someone out there with a flair for this sort of thing, who would be prepared to lend a hand? If so, we would be happy to hear from you.

In conclusion, we welcome new players, (and that now includes the ladies), to the Club. Come along to Wednesday evening training, or Saturday/Sunday matches, or make contact by phone or through the website www.westbergholftfc.co.uk.

R.Bell, Chairman.

West Bergholt Friendship Club



Once again we began our Christmas celebrations with a visit by the children from Heathlands School who entertained us with a programme of music and dancing, culminating with members joining them in some carol singing.

The enthusiasm of the young performers and the work put in by headmaster John Watts and his staff in providing us with such an enjoyable afternoon was much appreciated by all present.

For our Christmas lunch we went over to Fingringhoe, where the Methodist Church put on a first-class turkey-with-all-the-trimmings meal for us.

We ended the festive season at our January meeting, which took the form of a New Year party. Entertainment was provided by Brenda Green with a programme of songs and readings, and the meeting culminated with some substantial refreshments, including a glass of sherry.

This year's annual meeting - at which the current chairman, secretary and treasurer are due to retire - will be held on 24th April.

New members are always welcome. Meetings take place at the Orpen Hall at 2pm on the second and fourth Thursdays of each month.

Gerda Rumsey, Chairman.



Workers' Educational Association

On 8th January we started our new course 'What the Rocks Say'.

However they had scant chance to say much because after the first session the tutor cried off. The real reason for this withdrawal is shrouded in mystery. Accordingly we had to write this course off.

However, we look forward to better things and as February approaches we are choosing subjects for the courses starting in September 2008 and in January 2009 – more on this in due course.

Breaking News

In a late development the WEA Essex organiser is going to try to offset the above cancellation by setting up a replacement six-week course starting 1st April. Any positive development will be suitably advertised.

Cyril Biddulph

Spring Wordsearch



daffodils

easter

birdsong

aprilshowers

lambs

rabbits

nightingale

blossom

catkins

chicks

springtide

mayfair

sunshine

bluebells

primroses

march

Answers can be provided IF you want them!

Neighbourhood Watch



NEIGHBOURHOOD POLICING.

The new concept of Neighbourhood Policing (NP) was introduced by the Government some two years ago, and since then the local Neighbourhood Watch (NW) has been campaigning for the Police presence in the village to be increased, in line with what had been promised under the new NP policy. However, the implementation of NP appears to have been held up, due to a cut back by the Government in overall Police funding. Despite this, your NW team will continue to press for the NP policy for West Bergholt to be put into operation as soon as possible.

Anyone who may have views on the current Police coverage in West Bergholt, can discuss these at NAP meetings (see below) or by contacting the NW co-ordinator, John Ford on 240995.

At the same time as NP was introduced so were

NEIGHBOURHOOD ACTION PANELS (NAPs). These were set up to enable local people and interested groups to raise any problems affecting the quality of life in local villages and discuss these with the Panel members and how the problems might be tackled. NAPs would report back at subsequent meetings detailing what progress has been made with anything that had been raised previously.

The next two NAPs meetings have been scheduled for:

1. At Great Horkesley Village Hall on Thursday 13th March at 2 pm.
2. At Langham Village Hall on Tuesday 13th May at 6.00pm. Unfortunately NAP meetings, to date, have not been very well attended but, even so they are seen as an important opportunity for local people to raise issues such as policing (see above), crime, safety and anti social behaviour or anything else for that matter affecting village life. People are encouraged to attend these meetings, as the more who do, the more effective the NAPs will be.

PAVEMENT PARKING.

Attention has been drawn in previous Bulletins to the problem of illegal pavement parking. Though there has been some improvement, this type of parking still persists in parts of the village. By reminding people of its dangers to the elderly and those with prams, it is hoped that pavement parking can eventually be outlawed altogether.

GARDEN CRIME.

With the advent of spring, thieves turn their attention to garages and garden sheds (often left unlocked) in the hope of picking up valuable garden equipment. Does your insurance cover include the contents of your outbuildings? Unlikely if they are not securely locked.

CRIME UPDATE.

Crime levels in the village have remained fairly low over the winter period. But one of the nastier crimes was the theft of the British Legion collection box from Ash's Shop, which was reported to the Police and met with a quick response. People, it seems, are now more willing than before to report incidents to the Police, which is greatly assisting them in their never ending fight against crime. Please do report any

incidents to the Police in the first instance and then to NW, if appropriate.

CONTACTS.

1. Neighbourhood Police at Copford 01206 210441 or Mobile No. 07966 197134
2. NW Co-ordinator. J. Ford 01206 240995/241716
3. Crime Stoppers 0800 555111



West Bergholt Bobbin Lace Class



January saw the restart of the bobbin lace class at St Mary's, after a short break for Christmas. The students have continued with a series of coloured bookmarks, made using basic torchon lace techniques.



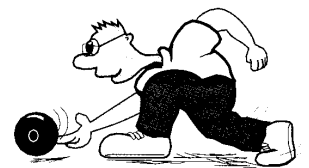
The activities in the class are becoming more diverse, as other students are now working on Bedfordshire lace (*illustrated to the left*) which can be identified by the plaits and leaf shapes in the designs. Another student is learning Flanders lace, one of the continental laces.

The classes take place during term time on Monday from 1pm until 3pm. They cost £65 for a course of 10 lessons. Please contact me if you would like to join us. I can teach the following English laces: torchon, basic Bedfordshire or Buckinghamshire laces. I can also teach the following Belgian laces: Bruges flower lace, Flanders and Binche lace.

Carol Maxwell, Tel: 0771 2648468



Bowls Club



The bowls club finished the year with a Christmas party, playing bowls for the first hour, then supper - bingo and a quiz, with plenty of prizes. This was enjoyed by everyone who attended.

The new year saw four teams competing in the county pairs. One team Barbara Davis and Greta Leatherdale, got through to the last sixteen - well done. The following week saw three members playing in the county singles at Braintree. Eileen Brown and Paul Leach got through to 'finals day' in March - good luck to you both.

The club triples competition took place in November; the club played a friendly match against Ardleigh before Christmas and won but lost to Chappel and Wakes Colne in January.

The AGM will be on Thursday 27th March at 7.30pm.

The Bowls Club welcomes new members at the Orpen Hall at 7.15pm on Thursday and Sunday evenings or telephone 240824 for further information,



Registered Charity: 299094

West Bergholt Care Network will be celebrating its 21st year at the Annual General Meeting in the Methodist Church Hall on Tuesday, 22nd April 2008 at 7.30. This special meeting, at which the long serving Chairman and Treasurer will be retiring, will be followed by a 3D slideshow entitled "Lake, Limestone and London in 3D" presented by Dave Weeden. Refreshments including a birthday cake will be served afterwards.

We hope to welcome as many people as possible to support Care Network and the many volunteers who provide this much appreciated community service.

1st West Bergholt Guides



In Guides we try to teach them how to look after themselves, work together as a team and have fun doing it. Last term with the help of Dove UK and Girlguiding we started using a booklet called Looking At Me which is all about building your self esteem. This is working very well.

The Guides also learnt about going to work and completed a Go For It called Top Job. One evening they learnt how to run a restaurant and make pizzas out of bagels and then to cost them adding together all the prices of the ingredients. This was a really fun evening.

In the October half term we went on a 'Super Heroes' Holiday at Thorrington. The Guides made Batman logos out of Hama beads, spider's webs, Penguin sharpeners and their own Super Hero out of Magic Clay. They also took part in climbing, 3D Maze and the Adventure Playground. In the evening they watched Spiderman and had ice creams for refreshments in the interval!

On 4th November we visited Legoland with the Guides from Myland and Great Horkeley. It did not rain this year and we all had tremendous fun on the rides. A lot of us got very wet on the water rides.

We took part in the Gift Service on Sunday 2nd December with the Brownies and Scouts and held a joint evening with the 1st and 3rd West Bergholt Brownies on 13th December.

Sandra Gates, Guide Guider

West Bergholt Gardeners' Association



Spring is arguably the most important time of the year for gardeners, what with ground preparation, planting, mowing and so on - if you listen carefully you will hear the groans as bodies are forced into action once more!

Our programme of speakers for 2008 has already included "Spring Magic" by Nick Bugden of Notcutts and "Garden birds" by RSPB. This year we are holding our Plant Sale in April, to reflect the earlier growing season and all are invited to the Orpen Hall at 7.30pm on Monday, April 21st. On May 19th Pat Welsh of Barnplants will be showing how to get the best from hanging baskets, and on June 9th we shall make an evening visit to the 'Growing Together Nursery' in Layer Marney.

Sissinghurst Castle Garden (National Trust), the focus of widespread media praise recently, is the venue for our coach trip on Tuesday, June 17th at a cost of £12 for NT members and £20 for non-NT members, departing from Orpen Hall at 9.00am. If there are seats available, non-members of the Association will be welcome to join our party at the prices quoted - please contact Gordon Dean (tel: 242194)

Although so far no one has claimed any individual items from our collection of past Trophies, we believe that a place for their permanent care has been identified. As some of the trophies date back almost 100 years, they do form part of our village history, and it is pleasing that they are to be preserved. On the subject of history, Ian Collin has carried out considerable research into the evolution of the Association, originally formed in the 19th century, and we are hoping to re-produce this in booklet form later in the year.

Visitors and potential new members are invited to come to the meetings referred to above or to our late summer/autumn programme, details of which will be included in the next issue of the Village Bulletin - do come along, you will be most welcome.

Cuckoo Farm Exhibitions

The Benham Gallery, Boxted Road,
Colchester CO4 5HH

www.cuckoofarmstudios.org.uk

March 8 and 9, 15 and 16, 22 and 23
Weekends only 11am to 4pm

Lisa Temple-Cox - "Un Squelette Humain"

May 31 to 1 June
11am to 4pm

Ed Goubert - "Virtuality: inside painting"

YOUR PARISH COUNCIL

For several months the Parish Council has been reflecting on its role in the village and the way it operates. Its statutory responsibilities, including acting as Trustee for several public areas of the village, are clear. Hopefully village residents feel that facilities such as the Orpen Hall, Lorken Daniell playing field and the allotments are well managed. As well as managing resources efficiently to meet community needs the Parish Council aims to be sensitive to the aspirations of local residents. To achieve this aim the Council needs to engage fully with village residents and several initiatives are planned to help facilitate this.

Good communications are essential to increase public involvement in the affairs of the village and to this end we have our Bulletin and a website, www.westbergholt.net.

In order to provide information of the activities of the Council on a more frequent basis a **new village notice board** will soon be installed outside the Co-op store. It is hoped that a new style agenda and minutes of meetings will be more attractive and informative to residents and encourage them to attend Council meetings which take place in the John Lampon Hall to the rear of the Orpen Hall at 7.30pm on the fourth Wednesday of each month. A fifteen minute period is set aside at the start of each meeting for the public to raise any issues on which they wish to comment or discuss.

The Parish Plan, a summary of which is included with this Bulletin for final consultation before its publication, draws attention to several issues that the Council is already considering. One such issue is the provision made for young people in the village. A meeting in February to which all those at secondary schools were invited gave the younger residents the chance to identify areas where they feel more can be done to meet their needs. Following this meeting we intend to form a Youth Panel to provide a line of communication with the Parish Council. With the help from outside agencies we hope to start a process to provide increased amenities for young people in the village and also encourage them as future adult residents to become more involved in the affairs of the village.

The last point is one which we hope all generations of our community will take on board. The implementation of the Parish Plan is an obvious catalyst for greater community involvement. A major responsibility will fall

to the Parish Council and public debate and support of its plans will make a difference. The Annual Parish meeting will be held on 25th June. More information about this will follow in the next Bulletin but we hope that advanced notice will ensure that it is noted in diaries.

Finally our Council of eleven members is now only ten following the resignation of Suzanne Bowden. Her contributions will be missed but this is an interesting time for anyone keen to participate in the affairs of the village and concerned about its future to join the Parish Council. If interested please contact in the first instance the Clerk, Val Walsom, on 01206 240149.

“Your village needs you”.

Allotment Matters

In the previous Bulletin an indication was given of how we propose to deal with the problems of rubbish generated by the Allotments. The Parish Council has approved these measures and evening bonfires starting at 5pm will be held if weather conditions permit on Monday 7th April, Tuesdays 6th May, 2nd June and Mondays 7th July, 4th August, 1st September, 6th October and 3rd November. We will endeavour to manage these fires according to guidelines which are being reinforced with plot holders.

A well used site such as ours does need constant attention to keep it in good order. Most plot holders work hard to maintain high standards and a site we can be proud of. The hedge at the Albany Close end of the site became very overgrown and you will notice that it has been drastically cut back. This has left a huge pile of wood and green rubbish for disposal. A contractor will be employed to shred as much as possible of this and separate out any wood suitable for domestic fires. At the same time the one remaining overgrown plot will be cleared.

The fencing at the New Church Road and Chapel Road edges of the site is beginning to fall into disrepair for a variety of reasons. It is now planned to carry out repair work on this in the early Spring. Plot holders will soon be paying rent for the coming year and you will see that this is being put to good use. At the moment there are no vacant plots and we have a short waiting list. However a few vacancies may occur as we enter a new season which we hope will satisfy demand.

Friends of Hillhouse Wood



Badger activity on the increase

In what is proving to be so far another wet, windy and mild winter, work parties have been carrying out essential management operations in the wood. This has included replacing the rotten legs on two of the bench seats and cutting all the growth right around the two ponds, including overhanging branches and invasive saplings. Also, in January, about 25 per cent of the reedmace choking the top pond was pulled out by hand ensuring the necessary area of open water essential for dragonflies, damselflies and other wildlife found in the pond habitat. Path drainage ditches and streams were cleared and heaps of brushwood cuttings dispersed.

Talks are continuing with the owners of fields adjoining or near the wood concerning the biodiversity changes taking place now that there has been a resumption of arable cultivation following the end of the set aside scheme under which the fields were fallow for some years. This had provided nesting and feeding habitats for a variety of birds, wildflowers and invertebrates, especially butterflies. These talks are aimed at securing the retention of headlands and hedge or new-planting tree-linking corridors to the wood and also towards the Woodland Trust's extensive tree plantings and wildflower meadows at Fordham Hall.

Badger activity is increasing in the wood and future work party activities, especially where machinery may be involved, will have to be a suitable distance from inhabited setts or the main feeding and movement areas.

Increased publicity for the meetings and activities of the Friends of Hillhouse Wood is already bringing dividends. The winter bird and nature walk led by Philip Smith and myself on January 6 was attended by a record 36. As well as seeing winter time birds and early signs of wildflower spring growth, the enthusiastic group saw three roe deer scampering across a nearby cereal field.

Dead and dying elms have been cut down as part of the ongoing work aimed at securing the survival of the colony of white-letter hairstreak butterflies, the caterpillars of which feed on elm flowers and leaves. This butterfly species is increasingly uncommon because of the scourge of elm disease.

Two dates for your diaries/calendars:

April 20 – Spring Nature Walk with Philip Smith and myself. Meet at the Old Church at 10.00am. Stout footwear, warm clothing. Chance to see spring bird life including chiffchaffs and other warblers, spring butterflies and the earliest spring wild flowers.

April 26 – Open afternoon to see bluebells and other spring flowers, butterflies and spring bird life including possible early nightingales. Meet at the Old Church at 2.00pm to collect nature trail guides and look at the Friends' display before joining Philip Smith and myself for guided walks through the woods.

Joe Firmin

Colne Valley Flower Club



The Colne Valley Flower Club started the year with the AGM in January where cheques totalling £880 were presented to two local charities. The first demonstration of the year will take place on 20th February when subscriptions of £20 will be due. New members and guests are always welcome at the Orpen Hall, 7.30pm on the third Wednesday in the month.

For any more information contact the Secretary, Alison Bradshaw on 01206 240262.

Clare Heyes



NWR Group



During our Autumn and Winter Programme we've enjoyed some varied subjects - for example, talking about the place where we were born (or brought up) especially as most of us do not come from the local area. We described our most favourite building in the world which some of us were lucky enough to have visited and some of us just dream about visiting! The origins of a well-known phrase or saying actually proved more interesting than we originally thought and an evening learning about and listening to Elgar and William Blake was very uplifting.

The National NWR Telephone Quiz got our brains going and, although we unfortunately got one answer wrong, it was a fun evening. Four members talked about a biography they had recently read and a Speech Therapist came to tell us about her very interesting job.

With the onset of light evenings and (hopefully!) nice weather, we're hoping to include more visits in our Spring/Summer programme. If anyone would like to join us one evening then please telephone Shirley on 240588.



Are holding an **OPEN DAY**
at the **ORPEN HALL**, West Bergholt
On **Sunday 6th April 2008** from 11am to 4.30pm
Layouts - Displays – Second Hand Stall
Entry Free, Light Refreshments Available

Web page www.colchestermrc.org

Conservatives

The West Bergholt and Eight Ash Green Conservative Branch has enjoyed a very successful year in 2007, following the renaissance of our Branch in March 2006. We have an enthusiastic committee of eight members, holding regular meetings for discussion and planning.

We have held three fund-raising events that have enabled us to meet our financial targets.

In January we held a Safari Supper, which was hugely enjoyable. The hostesses prepared wonderful courses and we finally gathered together for a very lively end to the evening with an address by our industrious MP, Bernard Jenkin, who attended with his wife, Anne.

Bernard also attended our wine-tasting evening at Carter's Vineyard in June. We were given an insight into a production process of the highest quality right here on our doorsteps. After the tour we enjoyed a splendid buffet, more wine and Bernard's address.

In May we helped Jill Tod with her leaflet distribution and manning of the Polling Booths so as to help secure her comfortable re-election to Colchester Borough Council.

In September we held our main fund-raising event of the year - a treasure hunt on foot around West Bergholt, after which a barbeque and drinks were served at the Chairman's home. Of the 21 participating families, two scored exactly the same number of correct answers. The tie break was the fastest time. Would you believe both families completed in two hours and eight minutes? So the first prize was decided on a penalty shoot out. Sadly one family had left by then so the other family won by default. Events such as this serve well to promote Conservative interests and to increase the profile of our Branch and Party.

We enter 2008 in buoyant mood already with plans made for our next Safari Supper. Please look out later in the year for leaflets promoting our main summer function. We will open this up again to all residents of both villages.

We always welcome new members into our branch. We are not about a hard line politics but seek to be inclusive as we promote Conservative values. Those who are interested to join us to become members, or members wishing to join us on committee, please contact me on 241411.

M G Harrington, Chairman



Wesley Guild

Our Wesley Guild meetings begin on Friday March 28th at 7.30pm when our speaker will tell us of his experiences in Kenya last year, working with a Christian organisation before the current troubles began. We look forward to meeting you.

Methodist Church News

Christmas and all the celebrations seem a long way off, but we must thank the uniformed organisations in our village for the support and presents donated at our special gift service in December. Letters of thanks from The Women's Refuge and Beacon House have been passed on to the Leaders. The women and children at the Refuge enjoyed a Christmas Party when everyone received a present thanks to the generosity of our young people.

Members and friends joined us for our New Year Social on a very dull, wet Saturday afternoon in January. Our bring and share tea gave us a wonderful selection of refreshments as usual, and judging by the chatter and laughter in the hall, the games organised for us by our regular Quiz Master made for a very enjoyable afternoon.

This year our Quiz Night will take place on Saturday 19th April at 7.30pm. Tables of 4 at £16.00 can be booked by telephoning Judith on 01206 241969. Feel free to bring along a few nibbles but as usual we will be providing light refreshments during the evening. We have limited places so book your table NOW.

The Women's World Day of Prayer takes place in the Methodist Church on Friday 7th March. Our speaker is the Revd. Ruth Ridge. The service prepared by the women of Guyana is at 1.30pm. This will give ladies collecting children from school plenty of time to meet them. Why not join us for our "Soup & Snack" lunch beforehand at 12.30pm in the Hall.

Please join us for our Easter Services on 21st March, Good Friday and Easter Sunday 23rd March.

Christian Aid Week is 11th – 18th May. The Hunger Lunch will be held in the Methodist Hall after our special service at 12.30pm. All are welcome.



MORE SILLY HUMOUR

Q - Why didn't the skeleton go to the New Year's Eve party?
A - He had no body to go with.

Q - What has a bed but does not sleep, and a mouth but does not speak?
A - A river.

Q - How did the human cannonball lose his job?
A - He got fired.

Library Times

The Mobile Library visits the village
fortnightly on a Tuesday,
For queries about the service telephone
Answers Direct 0845 603762

The stops and times for West Bergholt are:
Albany Road 13.45 – 14.20
Scout Hut, Lexden Road 14.45 – 15.30
Queens Road 15.35 – 15.55
Chapel Road 16.00 – 16.45

West Bergholt Cricket Club



We bade farewell in January to our Groundsman and President, Nobby Clark, who has retired from the club after an association of 56 years. He will be remembered as a very effective and accurate bowler who took many wickets over the years. He held major officer posts at the club including Chairman, Secretary and President, the position he has held for the last eight years. Current members will remember him most for his tireless work as Groundsman at the Manor Ground where he prided himself in preparing not only excellent playing conditions but also an attractive environment. The club showed its appreciation to Nobby when he was presented with a man-made bench to commemorate his dedication to our cricket club.



Next is the AGM on Monday 18 February when the club will elect new officers and committee members. We invite any interest in joining us to help run the club from anyone in the village.

There have already been two net sessions at the University and three more have been organised for March/April to help our senior and junior players to get their eyes in. We have a full set of fixtures organised at all levels, namely for two teams in the PDQ North Essex League, a team in the Colchester Community Evening League and no less than five junior teams at Under 11,12,14,15 and 16.

If anyone is interested in playing cricket for us from the age of 10 upwards or interested in helping out in administration or supervising our juniors, please call me on 240225 or e-mail on nige.l@webC)ffset.freereserv~ GQ.uk

Nigel Passmore, Chairman.



SILLY EASTER QUIPS

Q - Why don't ducks tell jokes when they're flying?

A - Because they would quack up

Q - What do you get if you cross a stereo with a refrigerator?

A - Cool music

West Bergholt Concert Band



30th Anniversary Celebrations !

Welcome to the band's 30th Anniversary ! We've certainly got an exciting year ahead, with seven concerts of our favourite music at our favourite venues, with musicians from seven local schools joining in with the fun!

We've already started the year's activities, with Training Band leading a number of weekend workshops for local primary schools, which have proven a huge success. We're then into our first full concert of the year, featuring music from Phantom Of The Opera, Dvorak's New World Symphony, Big Bands In Concert, Hoe-Down from Rodeo, and, ah-hem, The Stripper. That's what happens when the band get to request their favourite pieces!

Sunday 16th March – 3:00pm – West Cliff Theatre, Clacton (in aid of the Royal British Legion)

After a short break for Easter, we're then performing another "Instant Concert" with four Colchester secondary schools as a commemoration of the band's founder Sid Cooper, who taught at those schools. The programme includes music from Sinatra, The Sound Of Music, Gershwin, Mozart's Clarinet Concerto (Adagio), Joseph, Mars...and Deep Purple (the band's choice again!).

Saturday 19th April – 7:30pm – St Botolph's, Colchester (in aid of the Shelley Centre for Therapeutic Riding)

The rest of the year is equally busy, with our "Summer of '78" concerts featuring music linked to the year the band was started, such as Copacabana, Grease, Star Wars, Abba, and Bolero.

Saturday 14th June - 7:30pm - West Cliff Theatre, Clacton (in aid of St Helena Hospice) – with the Sweeting Swing Band

Saturday 12th July - 7:30pm – St Botolph's, Colchester (in aid of Essex Air Ambulance (TBC))

As you can see, we're looking forward to our best (and busiest) ever year, so if you're after a fun afternoon or evening's entertainment and a programme of great music...come along to one of the above ! Everything you need to know about the band (including concert details and directions, and how to join us) is on our website (www.wbcb.org), or you can call Graham on 01206 824157. We look forward to seeing you at some of our concerts...and wish you a belated happy new year !



Country Tale

Rotation of crops is so that they can get the sun on all sides.

Kidney Research UK

London Bridges Walk 2008

Tower Bridge-London Bridge-Southwark Bridge-Millennium Bridge
Blackfriars Bridge-Waterloo Bridge-Jubilee Bridge-Westminster Bridge

Sunday 6th July 2008

Starts at 11am, Pottersfield, near Tower Bridge
Distance approximately 7 miles, takes 2-3 hours

- Special event t-shirt
- Medal & certificate
- Refreshments
- Closing date for registrations 20th June
- For further information on places to stay, public transport, fundraising tips and ways in which you can help, please visit www.kidneyresearchuk.org

**Entry fee £8
per person, (£10 to
register on the day)
all ages welcome**

Please ask your friends,
family and work
colleagues for sponsorship
or why not ask them to
attend the walk with you?



Call **08456 12 12 26**

Text **0777 562 6263**

Email events@kidneyresearchuk.org
for more information or to enter the event



Orpen Players

Hansel and Gretel seemed to appeal to our audiences, with many of them informing our front of house how much they had enjoyed the show.



This year was special for us as we felt it had the right ingredient of young and old. We had ten new faces join us for this production; five of which were a result of our summer workshops. So there was a lot of new talent on show joining our already established team.

Playing the main characters we had Ellie Lumb and

Emily Hilson, who took to the stage like ducks to water and gave a very polished performance. Abbie Stringer, Megan Griffiths and Ben Maytham were the other youngsters of the cast who all gave very strong performances.

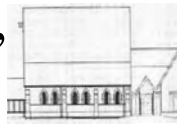
Also making a debut was Roxy Boyce-Bown as the Witch, and David Elliot as Dickie Dymwit. The chorus also played their support roles with panache. Congratulations to Fiona Hunt who directed this production.

Make a date for our Spring play "*The Importance of Being Ernest*" on 24th, 25th, 26th April 2008.

New members are always welcome. If you are interested in joining us call Colin Downer on Col 242265.



St. Mary the Virgin, West Bergholt



Developing St. Mary's for a growing community

Easter will soon be here!

As Easter is early this year, March will be a busy month starting with 'Mothering Sunday' on the 2nd when children from Heathlands will be taking part at the 9.30am Family Worship. On the following Sunday 9th, Rev Tony Rose will be celebrating Holy Communion also at 9.30 am.

Although it will not be school holidays until after Easter, the Groundbreakers holiday-club' will be held sometime in the middle of this month (The children from Heathlands will also be coming to St Mary's in March to remember Jesus' last days). Date for this service will be announced soon.

16th March is Palm Sunday which we shall commemorate, as last year with a 'Procession of Witness' from the Queen's Head pond at 9.30 led by a donkey. Worship at St Mary's should start about 10 o'clock, as usual. We shall, as last year, join with Gt. Horkesley to remember the Last Supper on Maundy Thursday, and the Crucifixion on Good Friday. This service will be in St. Johns, Gt. Horkesley at 7.30pm. The Friday 10.30am Meditation service, will be at St Mary's.

To end this busy month of church activities we are privileged to have the Archdeacon of Colchester, the Rev Annette Cooper to lead the Family Celebration and Communion on Sunday 23rd March at 9.30am.

Christmas carols at the Old Church is becoming a firmly established event in our calendar. This celebration of our Saviour's birth took place on Sunday 16th December, and was blessed by a warm, sunny afternoon.

Although the Old Church is without electricity Michael Neish conjured a great sound from the hand-pumped organ. The choir was in the gallery and sang unaccompanied, save for a beguiling recorder introduction by Lydia Smith, the ethereal sound floating above the congregation gave it quite another worldly atmosphere. This sound was almost certainly due to Caroline's expertise, courage and perseverance with the choir over a period of weeks, for which many thanks.

Mulled wine and mince pies, obligingly dispensed by Philippa and helpers, were enjoyed both inside and outside the Church, after the service.

Watch this space next Christmas.

Roy White



Royal British Legion

The Great and Little Horkesley Branch which incorporates personnel from West Bergholt lost a lifelong member last year when Geoffrey Goodwin died after a short illness. Geoffrey was our treasurer for 30 odd years, also a Vice President, and his presence at meetings is greatly missed.

The Branch is always pleased to see new members, and now the RBL has opened the doors to non, ex-service personnel, we are looking forward to our first members from 'civvi' street. Please contact the Secretary, Roger Drury, 271454 or Hugh Brivent-Barnes, 243717 who lives in the village.

The Branch meets on the second Thursday of each month in the 'Beehive' pub Little Horkesley at 8 pm, where the meetings are held in a formal, but convivial spirit. During the year we give, and go, to many social functions. These are in addition to our spring and autumn dinners which are held at the 'The Lion' Leavenheath. These dinners, although being informal occasions do give our wives or partners a chance to show off their latest dress or smart outfit.

The final Poppy Appeal collection figure for this area was £6,826.14. Branch members thank all who contributed.

St Mary's Carol Concert

St Mary's was packed to overflowing for the Christmas Eve 'Carol Concert' when our choir, which had been coached by the talented Caroline Finlay, led the congregation in singing favourite carols. The penultimate carol by the choir brought the house down with applause.

We (the church family) thank all who attended the Carol Concert for giving us a wonderful evening to start the Christmas festivities. But mainly, thank you Caroline for your hard work and coaching skills.

Church regular events - Alongside 5 T's on Thursdays we also run 'Squeals on Wheels'. We also hold an afternoon tea club for a chat and tea from 2.30 to 4ish everyone welcome every Thursday in the Church. A quarterly Senior Citizen Lunch is also being served.



EDITORS KORNER

The *West Bergholt Village Bulletin* appears on the village web site during the month of publication. If any clubs and organisations are not included in the Bulletin they are missing an opportunity to advertise their activities. If you want to be included on the web site get in touch with the Bulletin Team.

Bulletin contacts:

Editor: Bernard Colbron 240297

Advertising: Susan Swan 242319

Contributions: contact any member of the editorial team listed below.

Editorial Team:

John Bates 240741, Bernard Colbron 240297, Jon Lander 241288, Susan Leng 241748 and Susan Swan (advertising) 242319.

Copy for June issue should be with the Editors before 1st May 2008 - Regretfully late submissions cannot be guaranteed entry into the Bulletin



village bulletin *what's on guide*

Regular Village Events

Sundays:

- Prayer Meeting**, 10.15am 1st Sunday every month - Methodist Church
- Service of Worship**, 11am Morning Worship - Methodist Church
- Bowls Club**, 7.30pm - Orpen Hall

Mondays:

- Bluebell Preschool**, Monday to Friday - Orpen Hall
- Parent and Toddler Group**, 9.30-11.30am - Methodist Hall
- Village Art Group**, 2.00pm - Methodist Church Hall
- Gardeners' Association**, 7.30pm 3rd Monday-Orpen Hall (Sept-Dec, Feb-May)
- SG KARATE**, Scout Hut - Mondays 8:30 - 9:30 pm. £4.00 per class.
- Bobbin Lace Class**, 1pm-3pm, term time only, St Mary's Church - Carol Maxwell, 0771 2648468

Tuesdays:

- NHS Primary Care Trust Baby Clinic**, 10am to 11am - Methodist Hall
- Miss Jackson's Dancing Class**, 5.30-7.30pm - Orpen Hall
- Tai Chi**, Continuing Class, 7.30-9.30pm - Scout Hut - Wendy 272745
- Methodist Church**, 11am 2nd Tuesday Communion Service
- Badminton Club**, 8.15pm - Orpen Hall
- W.E.A.**, 8.00pm - Methodist Hall (Sept. to Dec. and Jan. to Mar.)
- Slimming World**, 7pm - Orpen Hall, Carol French 0794 660 3939
- Morning Prayers**, 9.30am - 10am - weekly in Methodist Church

Wednesdays:

- Coffee Morning**, 10.00am 2nd Wednesday - Methodist Hall
- Women's Institute**, 7.15pm 1st Wednesday - Orpen Hall
- Colne Valley Flower Club**, 7.30pm 3rd Wednesday - Orpen Hall (not August or December)
- History Group**, 2nd Wednesday (not December) Phone 240297 for details
- Parish Council Meeting**, 7.30pm 4th Wednesday - Orpen Hall
- Tai Chi**, Continuing Class, 1.30-3pm Orpen Hall - Wendy 272745 and New Beginners Class 1.30-3pm - John Lampon Hall - Tel. Nick 853127
- West Bergholt Craft and Quilters Group**, 2nd Wednesday (except Christmas) - Joyce Lucking Room
- Ladies' Afternoon Badminton**, Orpen Hall, 3.00pm to 4.30pm. New members welcome - contact Pat Butcher for details 242075
- Aerobics-Legs, Bums and Tums**, Methodist Hall, 6.45pm-7.45pm. Tel 243773.

Thursdays:

- Friendship Club**, 2.00pm 2nd and 4th Thursday - Orpen Hall
- Squeals on Wheels**, a service for pre-school 'toddlers' and families in St Mary's Church, 10.30am every Thursday, in term time.
- Colchester and District Model Railway Club**, 8pm - Armoury Farm
- National Women's Register**, 8.00pm fortnightly, telephone 240588 for details
- British Legion**, Gt & Lt Horkesley branch which includes West Bergholt - meet Beehive Pub, Lt Horkesley 2nd Thursday at 8pm
- Bowls Club**, 7.30pm Orpen Hall
- Table Tennis Club**, 7.30-9.00pm St Mary's Church Hall
- Pilates**, 9.30am, - Scout Hut, Methodist Hall evenings tel: 564348 for details

Fridays:

- West Bergholt Concert Band**, 6.00-7.00pm (Juniors), 7.00-9.00pm (seniors) - Heathlands school
- Wesley Guild**, 7.30pm, 4th Friday - Methodist Hall (March to September)
- Orpen Players**, 8.00pm - Orpen Hall

Saturdays:

- The Performing Arts Centre**, 10.30am-12.30pm for pupils aged 6 to 11 years old - Orpen Hall

West Bergholt Care Network

If you live in West Bergholt and need help getting to an appointment the Care Network may be able to help. Telephone the number below for the day on which you make your call. If there is no response, please don't leave a message on an answering service, try any other number.

Monday	242 319	Wednesday	241 103	Saturday	242 075
Tuesday	242 185	Thursday	241 672	Sunday	242 075

St. Mary's Church Services and functions

News of other clubs, committees etc. that use the Church Hall elsewhere in this 'Village Bulletin'

March

- Sunday 2nd 9.30am Mothers Day and Simnel Sunday
- Sunday 9th 9.30am Holy Communion and Bugs
- Date to be informed 10.00 - 12.00 noon Easter Groundbreakers
- Sunday 16th 9.30am Palm Sunday Family Service
- Sunday 23rd 9.30am Easter Day Family Service
- Sunday 30th 9.30am Sunday Service and Bugs

April

- Sunday 6th 9.30am Sunday Service and Bugs
- Sunday 13th 9.30am Sunday Service and Bugs
- Sunday 20th 9.30am Family Service with Brownies
- Friday 25th 7.30pm St Mary's Church AGM
- Sunday 27th 9.30am Holy Communion and Bugs

May

- Sunday 4th 9.30am Family Communion and Bugs
- Sunday 11th 9.30am Pentecost - Holy Communion
- Sunday 18th 9.30am Family Service
- Sunday 25th 9.30am Holy Communion and Bugs

St Mary's Church Creche

A 'Creche' is available in the church hall for children under 5 years old, if required.

Rector - The Rev. Colin Horseman
Telephone: 271242

Whilst Colin is away please contact either of the 'Church Wardens'

Philippa Slater 247147 or Peter Finlay 241517

Bluebell Pre-School - Learning Through Play

Bluebell Pre-School employs Staff who are qualified to encourage the development of your child in all areas of the Pre-School curriculum, as defined by the Education Authority.

We are open from 9.15am to 3.15pm. Full day care and sessions available for 2 - 5 year olds. Sessions are held in two large halls daily.

If you would like to know more or put your child's name on our waiting list, contact Jackie Leach on 241677.