



WHAT ARE THEY?

- a reminder!

- Neighbourhood Plans are a new form of community-based planning which enable villages, parishes or similar-sized localities to produce a planning document which covers how they would like to see their areas develop in the future.
- Once adopted they form the blueprint for new development and sit within a District or Borough Council's own local Plan document.
- Although NPs are primarily about future development, they can also include projects like those in the present Parish Plan. It is likely that ours will include elements of both.

West Bergholt Neighbourhood Plan

What will ours look like?

We intend to follow our successful Parish Plan format tempered with the statutory needs of the NP to produce a short document with the following chapters:

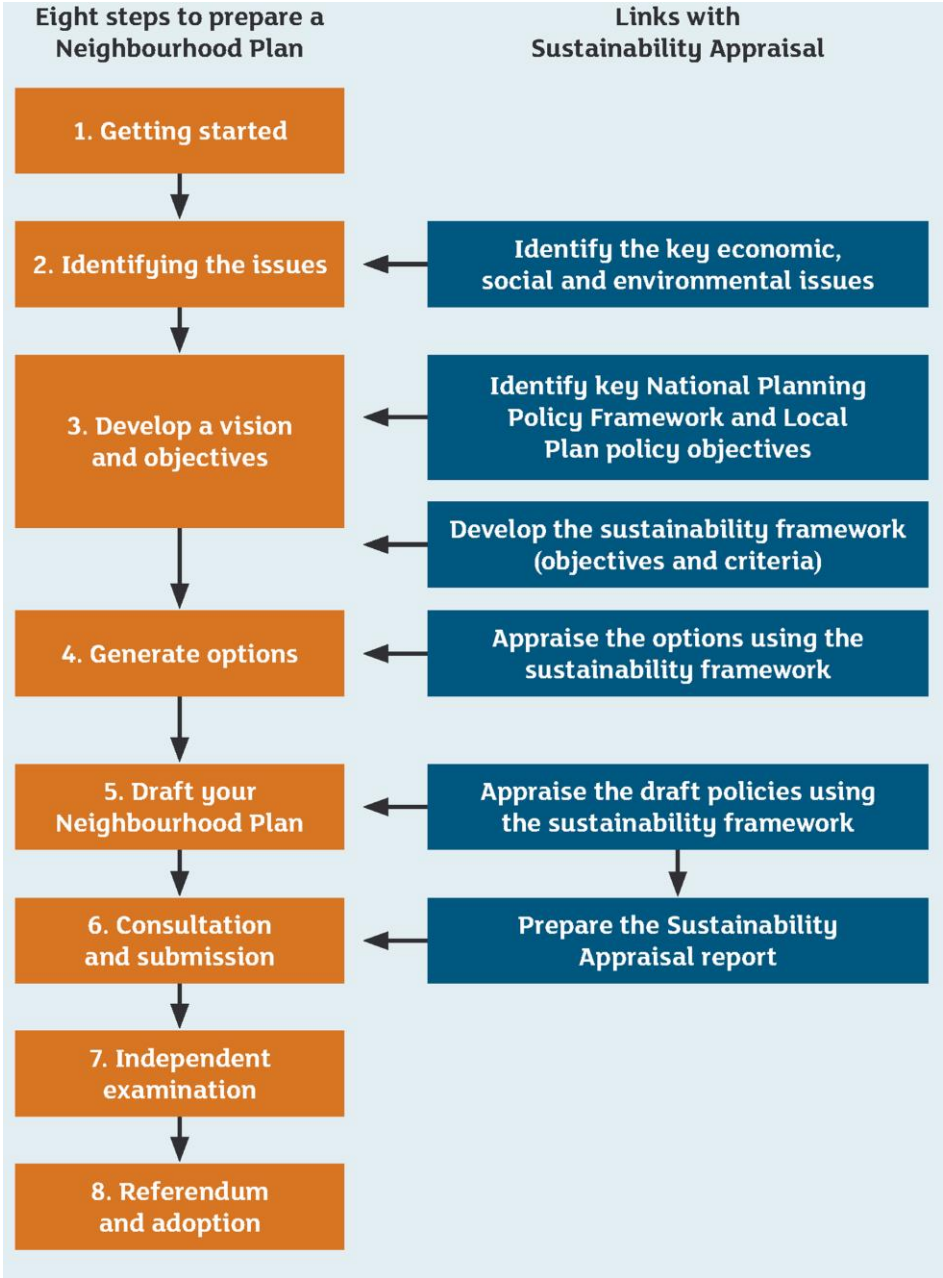
- ***Introduction***
- ***Preparing the Plan***
- ***About West Bergholt***
- ***Vision & Aims & Framework***
- ***Future Development of the Community – promoting inclusive growth***
- ***Policies***
- ***Village Society & Community***
- ***Environment***
- ***Housing***
- ***Business, Commerce & Employment***
- ***Sport & Recreation***
- ***Community Safety***
- ***Transport and Highways***
- ***Communications***

Policies will be interspersed throughout the document. Each chapter will include a planning and community policies

- Our Evidence in Appendix Form



West Bergholt Neighbourhood Plan



ARE WE NEARLY THERE YET?
- almost!

- ACTIVITIES COMPLETED**
- General awareness and background surveys complete
 - Issues and options presented
 - Drafted consulted upon
 - Planning Policies revised
 - Development sites confirmed with CBC
- NEXT STEPS**
- Spring/summer – consultation on the final plan