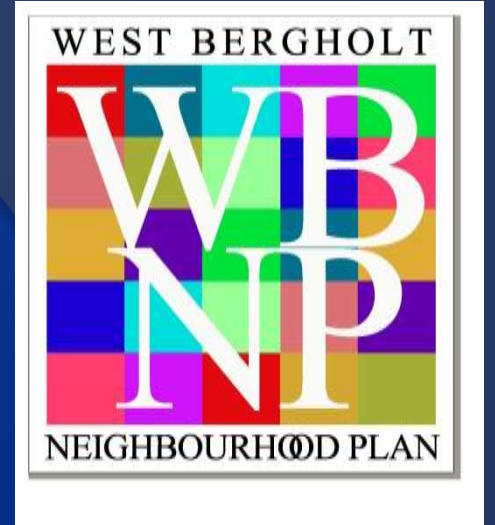


WEST BERGHOLT NEIGHBOURHOOD PLAN



Chris Stevenson

Chairman, West Bergholt Neighbourhood Plan Steering Group

Welcome – John Gili-Ross



Welcome from the Steering Group and PC

NP: Why bother?

NP: What's in it for us?

NP: We have an opportunity to plan our destiny and you have an opportunity tonight to assist us.

Tonight's Agenda

Time	Item	Lead
19:00	Welcome	John Gili-Ross
19:10	Introduction to tonight and progress with Neighbourhood Planning	Chris Stevenson
19: 25	Results from Household Surveys	Gunter Klaphake
19:40	Discussion Groups	Facilitators Brian Butcher; Andrew Savage; John Gilli-Ross
20:15	Feedback	Facilitators
20:30	How to get involved with the Steering Group	Murray
20:40	Next Steps	Chris Stevenson
20:45	Thank you and goodbye	John Gili-Ross

Community-led planning – a journey:

Chris Stevenson

⦿ Parish Plan

- Created between 2005 & 2008
- produced independently from the PC, but adopted by the PC & CBC
- Project-based

⦿ Village Design Statement

- Essentially a guide to good development practice in our village
- Jointly produced by the Parish Planning Group and Parish Council, adopted by CBC in 2011

⦿ Neighbourhood Plans

- Are new, and take community plan making a stage further by giving people a direct say in how the village changes over time
- Statutory – ie they have a basis in law



Projects

- Bergholt Youth Group
- West Bergholt Sports Club
- Village Design Statement
- Broadband
- Youth Shelter
- Traffic and Safety Plan

Village Design Statement

- Guide to good practice in design
- Development centred
- Planning applications
- Policies of what is allowed and what isn't
- Feeds into CBC formal approval process

Neighbourhood Plans

- Spatial plans
- Cover how much or how little housing there should be
- Can cover employment
- Can cover projects similar to a Parish Plan
- Are likely to incorporate a VDS
- Will contain maps, plans and policies

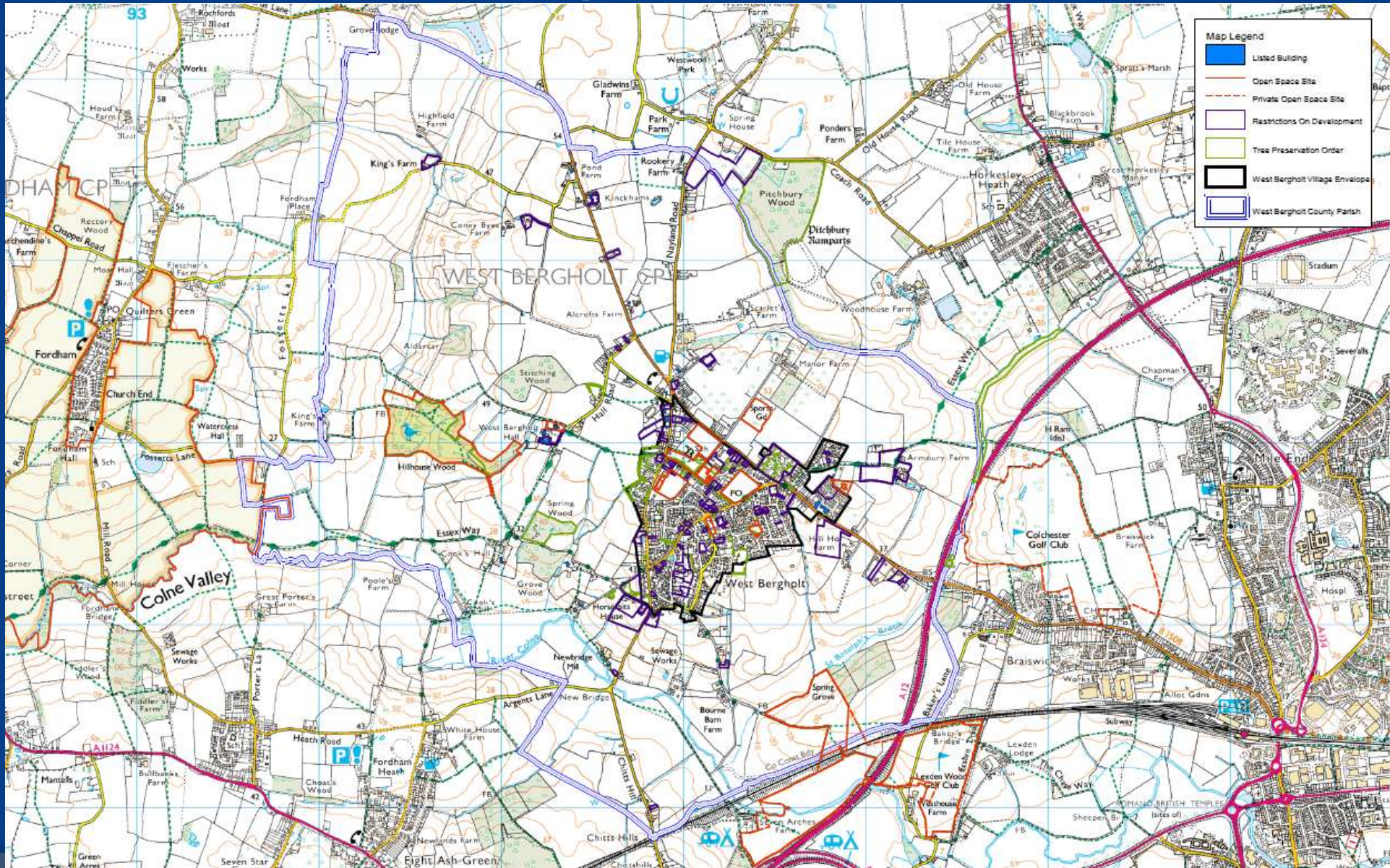
Origins of NP

- ⦿ Government's Localism Act of 2012
- ⦿ Encourages local communities to get organised and take control of their destiny
- ⦿ Plan on the basis of the most logical geographical area in a Borough and work with the Planning Authority
- ⦿ NP can contain a range of ideas including projects, initiatives and design guides, **but they must include proposals for land use in the area which includes housing and employment.**

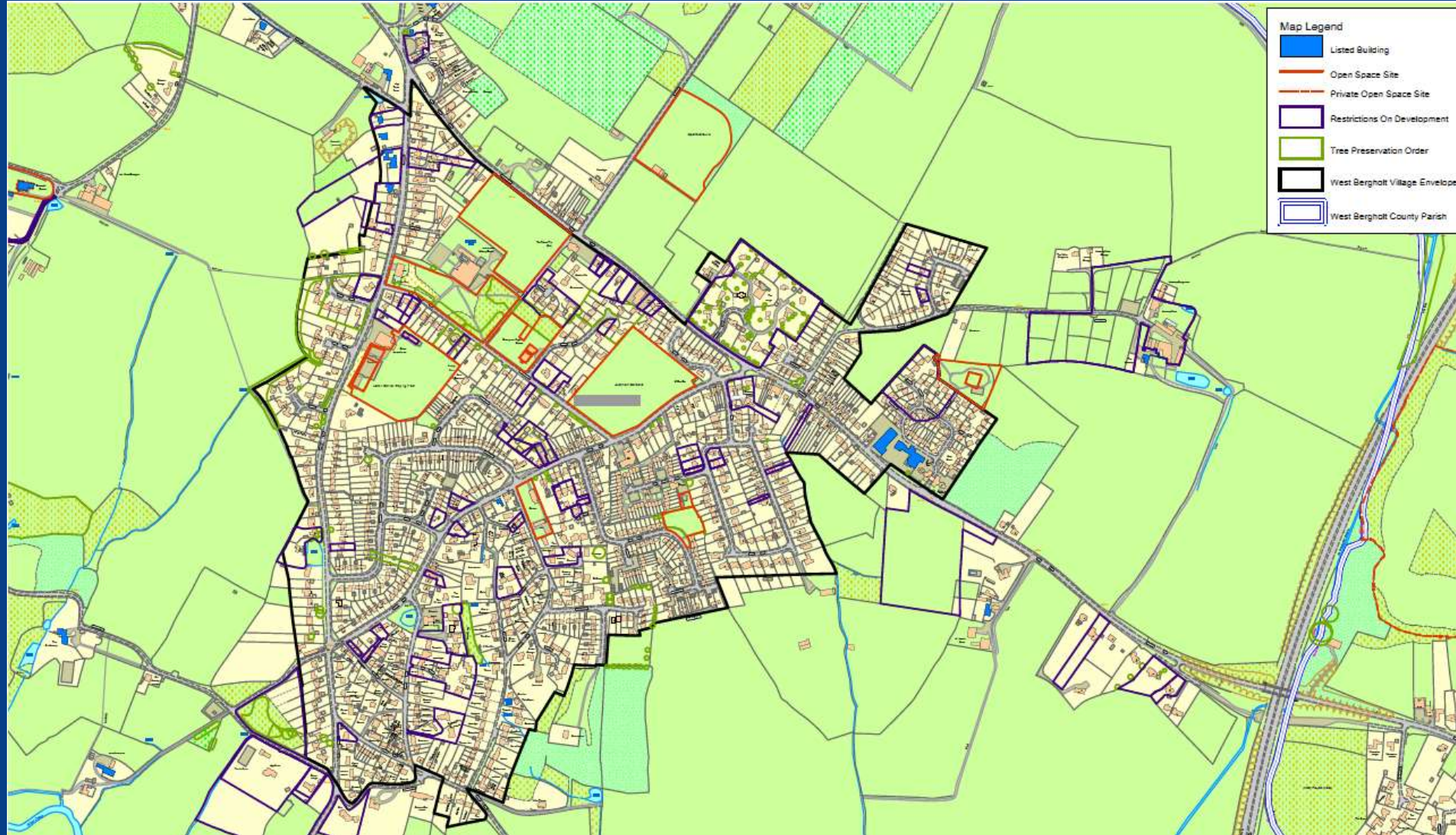
West Bergholt's Approach to NP

- ⦿ Based on Feedback from the initial workshop
- ⦿ Area to be based on the Parish Area and topic areas as follows:
 - Community and Social
 - Environment
 - Transport & Highways
 - Planning and Housing
 - Amenities and Commerce
 - Sports & Recreation
 - Community Safety
 - Communications
- ⦿ We have formally consulted on the area and this is confirmed as covering the WB Parish

West Bergholt NP area



West Bergholt Village Envelope



NP Outline Timetable

- ⦿ Steering Group formed: Oct 2012, Workshop: Nov 2012
- ⦿ Surveys: June 2013 to March 2014
- ⦿ Evidence gathering & Draft ideas for consultation: mid 2014
- ⦿ Draft Plan: Winter 2014; Final Plan: Spring 2015
- ⦿ EIP, Referendum and Plan adoption Autumn-Winter 2015

NP's are beginning to take shape!

- Several hundred plans are in the process of being set up
- 8 have so far been through all the stages and have held a successful referendum.



Talking West Cheshire

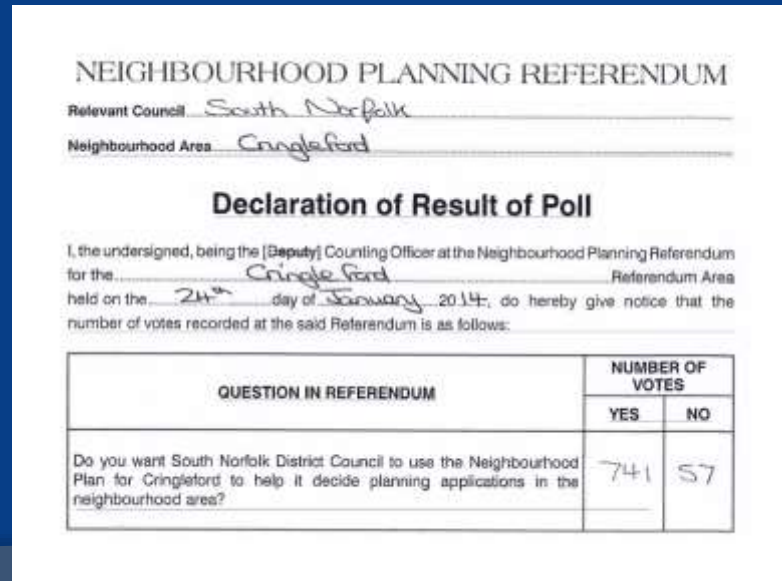
Home My News Events Blogs Love to Live My Community My Services

Record referendum vote as Tattenhall says massive 'Yes'

24 October 2013

Residents of the Cheshire country village of Tattenhall have given overwhelming support to England's fourth Neighbourhood Plan.

By 905 votes to 38 a referendum endorsed a vision for a "sustainable and successful" future for the Doomsday Book village, which has taken the local community over two years to prepare.



NEIGHBOURHOOD PLANNING REFERENDUM

Relevant Council South Norfolk

Neighbourhood Area Cringleford

Declaration of Result of Poll

I, the undersigned, being the [Deputy] Counting Officer at the Neighbourhood Planning Referendum for the Cringleford Referendum Area held on the 24th day of January 2014, do hereby give notice that the number of votes recorded at the said Referendum is as follows:

QUESTION IN REFERENDUM	NUMBER OF VOTES	
	YES	NO
Do you want South Norfolk District Council to use the Neighbourhood Plan for Cringleford to help it decide planning applications in the neighbourhood area?	741	57



DISTRICT OF HARBOUROUGH

History made in village as neighbourhood plan gets a 'yes'

Published Friday, 17th January 2014

Brington, Leicestershire has made history after villagers voted 'yes' to its neighbourhood plan - becoming the first village in the East Midlands to achieve such a result.

A referendum held in the village on Thursday (16 January 2014) saw local residents vote overwhelmingly in favour of the neighbourhood plan.

Communities can use a 'neighbourhood development plan' to choose where they want to build new homes, shops and offices, have a say on what these new buildings look like and grant planning permission for new buildings they want to see go ahead.

Thursday's referendum, organised by Harborough District Council, asked villagers to vote 'yes' or 'no' to the question: 'Do you want Harborough District Council to use the Neighbourhood Plan for Brington Leicestershire to help it decide planning applications in the neighbourhood area?'

The results saw 7,421 people in the village vote 'yes' (94%) with 492 voting against the plan (14%). There were four rejected ballot papers.

The turnout was 68.6% (including postal votes) with 11,217 people casting votes out of an electorate of 16,347 residents.

Household Surveys – Gunter Klaphake

⦿ How, When & How Many

- Village Bulletin and Web, Summer 2013
- 470 replies
- 42% replies from men, 56% from women
- 80% over 45 years old
- 62% lived in village for over 16 years

Household Surveys

- ⦿ Environment
 - Overwhelming support for need to protect open space and ideally provide more
- ⦿ Community Safety
 - 90% of people feel safe
- ⦿ Community Amenities and Commerce
 - Equal numbers in favour and against more facilities being needed. Local business expansion favoured by majority
- ⦿ Sport and Recreation
 - Over 50% think facilities rare adequate, but many pointed out lack of facilities for teenage children
- ⦿ Communications
 - 50% of people feel that existing channels are adequate but a significant minority view that this needs improving.
 - 42% of residents feel involved in local decision making but significant minority do not feel involved

Household Surveys

- ⦿ Transport & Highways
 - Huge response with 152 comments made
 - Nearly two thirds support 20mph speed limits and over 80% support parking restrictions at junctions
- ⦿ Housing & planning
 - Overwhelming support for residents having a say in future development
 - 70% support maintaining the village envelope
 - Minority support for limited expansion for specific purposes
- ⦿ Significant and valuable set of comments received

- ⦿ Want to read the fuller report?
 - Visit: [Household-Survey-Summary-June-2013.pdf](#)

Discussion Groups – Murray Harlow

- ① Devised to help plan three very important phases of our NP
 - Produce a document which covers the current state of play in our community, called an **EVIDENCE BASE**
 - Look at our environment (built and natural) and think about how we might want to protect and enhance this in the future, to inform a **POLICY BASE**
 - Look at how we might start to consider future development and how we might start engaging with the community over change to assist with forming our **PROPOSALS**

Approach

- ⦿ Each table has some materials and a facilitator
- ⦿ Use flip charts to record your thoughts
- ⦿ Try to use the following approach to order your work
 - **Analyse**: data, information, interpretation, gaps in knowledge
 - **Plan**: use of information to logically put together our arguments
 - **Do**: How present information
 - **Review**: who will be involved.

Table one: Andrew Savage

- ◉ West Bergholt Today
 - What do we know about our community?
 - Where might we get factual information?
 - How might we use this information?
- ◉ Materials
 - Household Survey, Map
 - Use headings of NP to discuss these aspects
- Approach
 - **Analysing**: What is the survey telling us; do we need more information on specific matters. Where will we get this from?
 - **Planning**: How will we categorise our information?
 - **Doing**: How will we document our findings?
 - **Reviewing**: Who wants to put together the analysis, the planning and the doing?

Table Two: Brian Butcher

Our Environment:

- What do we want to protect and enhance?
- Thinking about both built and natural environments
- local policies needed to achieve this

Approach

- **Analysing**: Do we need further surveys before we can develop any policies?
- **Planning**: What policies do we want to develop (so that there is a beneficial outcome) ?
- **Doing**: What further documentation do we need to support the policies?
- **Reviewing**: Who wants to put together the analysis, the planning and the doing?
- **Projects**: Outside the Plan are there any matters which are worthy of consideration?

Materials

- Household Survey, Maps

Table Three: John Gili-Ross

West Bergholt Tomorrow

- Change is inevitable but how can we plan for this?
- Consider how we might approach housing and employment aspects of change
- What about other land use changes for sport, open space?
- How are we going to draw up scenarios and ideas for the community to look at?
- What are the ways of engaging communities on development and change?
- Approach
 - **Analysing**: What is the survey and other pressures on the village telling us; do we need more information?
 - **Planning**: How will we categorise our plans for change?
 - **Doing**: How will we present ideas and when?
 - **Reviewing**: Who wants to put together the analysis, the planning and the doing?
- PROJECTS: Outside the Plan are there any matters which are worthy of consideration?

Feedback

⦿ Facilitators

- West Bergholt Today key points
- West Bergholt Tomorrow key points
- Our Environment key points

How to get involved – Murray Harlow

⦿ Directly

- Join the steering group either as an active member or
- A supporter to act as a sounding board

⦿ Indirectly

- As a member of the community take part in
 - Workshops
 - Surveys and questionnaires
 - Consultations
 - Possibly as a landowner

⦿ Contacts:

- Chris Stevenson; Murray Harlow

Next Steps and Thank You – Chris Stevenson, John Gili Ross

⦿ Next Steps

- Three groups will now start meeting to organise their thoughts
- We will involve CBC and other authorities to assist us
- Use of web site and Bulletin to help spread the word

⦿ Thank You

- For attending
- For your ideas
- But hopefully not goodbye as we need you to play an active role